

□ **CARE AND CLEANING INSTRUCTIONS**

- The seat and cover should be cleaned using warm soapy water.
- Do not use aggressive or abrasive cleaners as this may scratch the surface of the seat.
- The hinges should be cleaned using soap, or a mild detergent. After cleaning the hinges should be rinsed in clean water and dried.
- Never use bleach, concentrated cleaners or acids on the hinges as this will cause discolouring and pitting.
- Do not leave bleach in the toilet bowl with the cover closed because this may cause discolouration of the seat and hinges.
- Take care not to splash the hinges when using bleach in the toilet bowl.

The Bathroom Works
National Avenue
Kingston upon Hull
HU5 4HS
England
Telephone: (01482) 346461
Telefax: (01482) 445886.

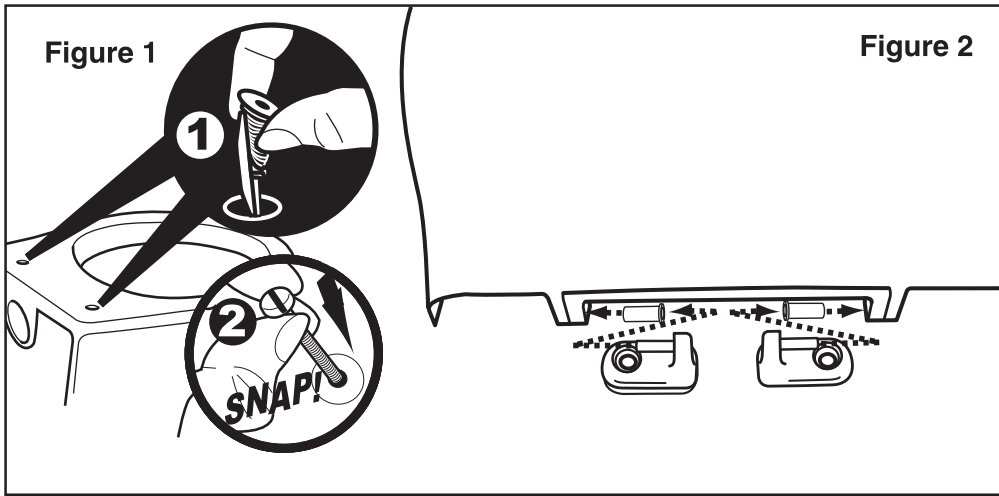
CUSTOMER CARE HELPLINE
0870 1296085
FAX LINE 01482 499611
ukcustcare@idealstandard.com

Ideal Standard (UK) Ltd. pursues a policy of continuing improvement in design and performance of its products. The right is, therefore, reserved to vary specifications without notice.

4456 05/08

Toilet Seat Installation

Important Care and
Installation Instructions,
Please retain for future reference.



Insert the sprung retainers into the pan, before snapping into place with a screw. (Figure 1)

Ensure that the plastic sleeves that lock the seat and cover together are present, before inserting the hinge pins. (Figure 2)

IMPORTANT! Please check the orientation of the hinges. They should throw the seat forwards, (Figure 3). This ensures that the seat lines up with the pan and has the correct clearance.

FAILURE TO FIT THE HINGES CORRECTLY CAN RESULT IN SEAT BREAKAGE.

Lower the seat/cover and hinge assemblies onto the pan ensuring that the plastic gaskets are placed between the hinge and pan. (Figure 4)

Insert and tighten the hinge assembly screws using a screwdriver, (Figure 5). This is easier with the cover up and the seat down.

Insert the covers into the hinges, (Figure 6), this is easier with both the seat and cover in their upright positions.

