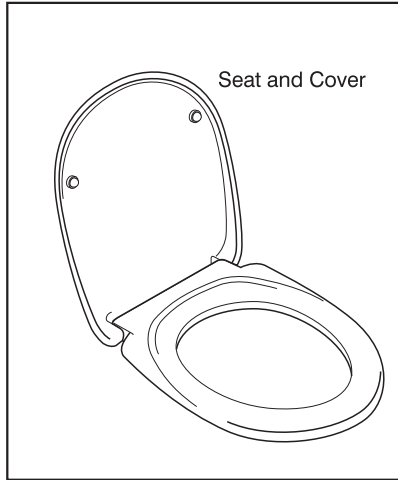




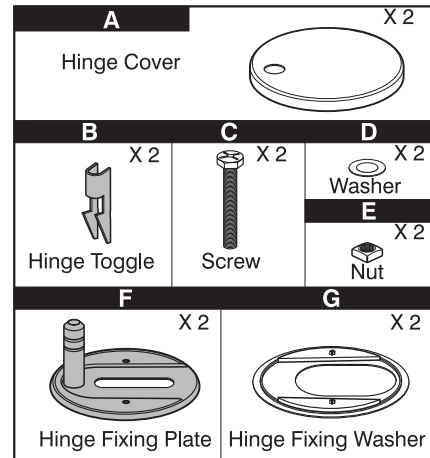
Vue Toilet Seat

Assembly and Installation Instructions

Parts Supplied



Fittings Supplied - Hinge Pack



Tools Required (not supplied)

- Screwdriver

Before You Start

- Check the pack and make sure you have all the parts listed. If not, contact the vendor who will be able to help you.
- When you are ready to start, make sure that you have the right tools to hand, plenty of space and a clean, dry area for assembly.
- **Please Note:** Although these instructions are comprehensive, it is always recommended that a technically competent installer should undertake installation.

Hinge Assembly

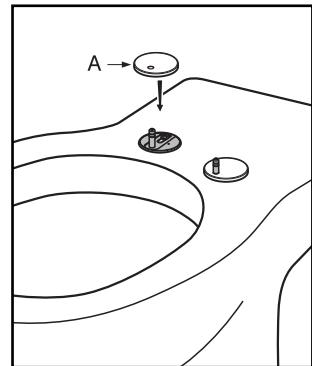
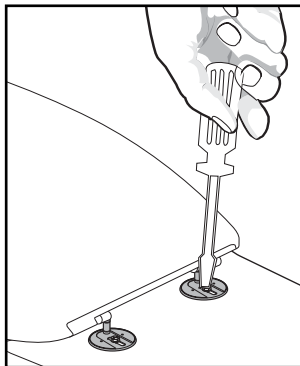
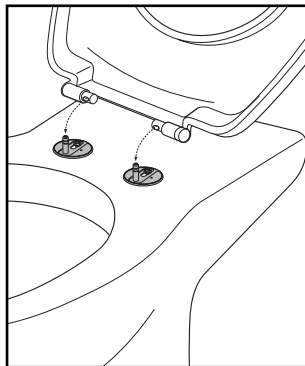
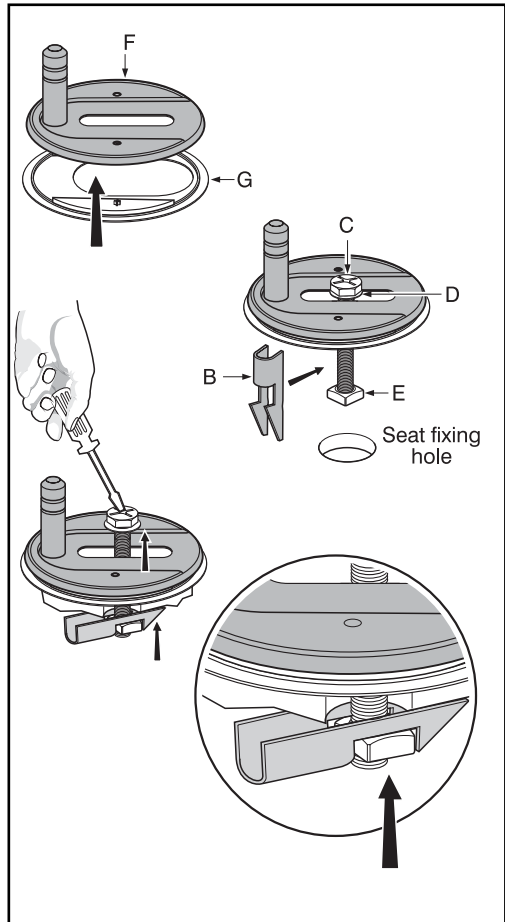
1. Locate hinge fixing washer (G) under hinge fixing plate, (F).
2. Place washer (D) on screw (C) and locate in hinge fixing plate. Place hinge toggle (B) and nut (E) onto screw thread, and with toggle in vertical position, push through seat fixing hole.

3. Lift screw upwards ensuring hinge toggle is horizontal with nut engaged in slot. Loosely tighten screw until resistance is felt.

Repeat procedure for second hinge.

Do not fully tighten at this stage as adjustment will be required.

4. Locate seat and cover on hinge fixing plates and adjust position so seat sits squarely on pan.
5. With seat and cover in closed position securely tighten screws.
6. Remove seat and cover. Place hinge covers (A) over hinge fixing plates.
7. Replace seat by pushing down to locate securely.



Product Care

All our products are designed, manufactured and supplied to give many years of reliable service, provided they are properly maintained and cared for.

These are our recommendations to make sure that your bathroom stays looking good:

Plastic WC Seats

Do's

Clean immediately after use to stop a build up of dirt and scale.

Use warm soapy water, Cif cream cleaner or Domestos Multi Active surface cleaner.

Polish out minor scratches and abrasions with a mild polishing compound.

Don't

Never leave pools of soap, shampoo or cleaning detergent (please see above) – these can cause permanent stains.

Never let cigarettes/flames near - your seat can burn and melt.

Never use household chemicals – a range of products such as paint stripper, nail varnish remover, household bleach, perfume, aftershave or strong disinfectant.

We cannot recommend the use of any scouring products or cream cleaners other than Cif.

Never mix different cleaners on your seat – they can react to give off poisonous gas.

If bleach comes into contact with the stainless steel hinges, clean off immediately

Product Guarantee

5 YEARS

Toilet seat and cover

This covers products in domestic use by the consumer and not commercial or business use.

All Ideal Standard products must be installed, used and cared for in line with our fixing instructions, local water byelaws and current water regulations.

Access to our products for installation, service or repair and costs relating to this is the owners or installers' responsibility.

Parts are guaranteed for five years and will be replaced if found faulty.

This guarantee does not cover general wear and tear.

Applies to the UK and Republic of Ireland only.

CUSTOMER CARE HELPLINE

0870 1258905

FAX LINE 01482 499611

email: ukcustcare@IdealStandard.com

We pursue a policy of continuing improvement in design and performance of our products. The right is, therefore, reserved to vary specifications without notice.