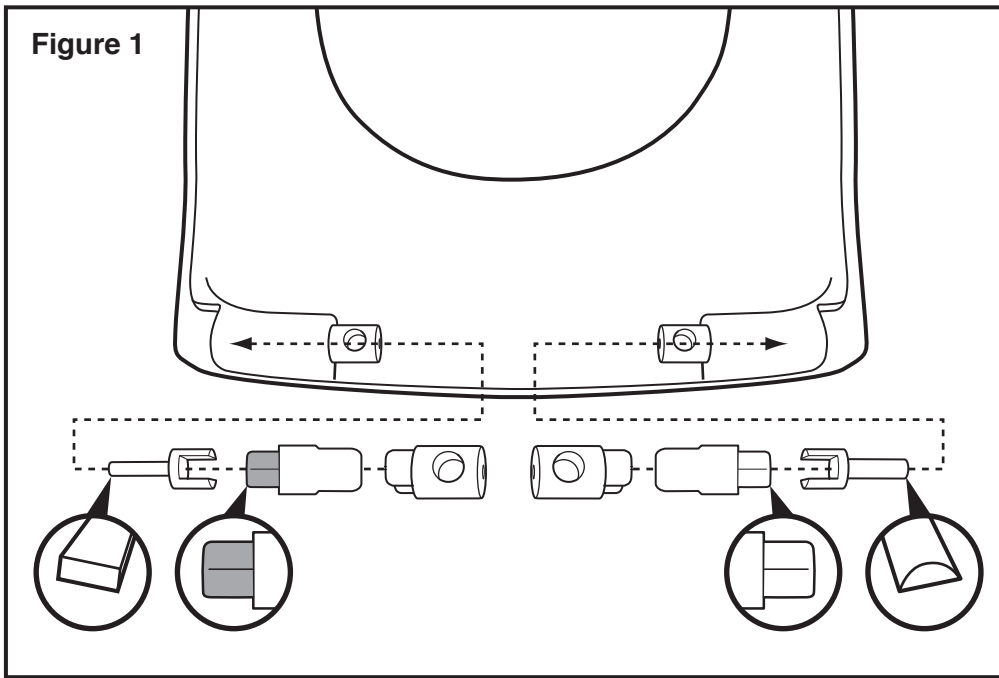


Figure 1



Ensure that the hinge pins are ready assembled in the seat lugs. If they have become dislodged, reassemble as shown (Figure 1).

Insert the sprung retainers into the pan. Clip the tab - on the end of the wings - under the washer, before fitting through the WC and snapping into place with a screw (Figure 2).

Place the hinges on the pan, along with the rubber washers (Figure 3). Add the screws and tighten them FINGER TIGHT only.

Lower the seat onto the hinges and align the seat with the pan (Figure 4), ensuring that the hinges do not become dislodged from the seat lug. Push back into position if necessary.

Tighten the screws securing the hinges to the pan with a screwdriver (Figure 5).

Tighten the hinge grubscrew with the tool provided (Figure 6).

NOTE - Please re-check the screws that secure the hinges to the WC are still fully tightened after 1-2 weeks usage

Figure 2

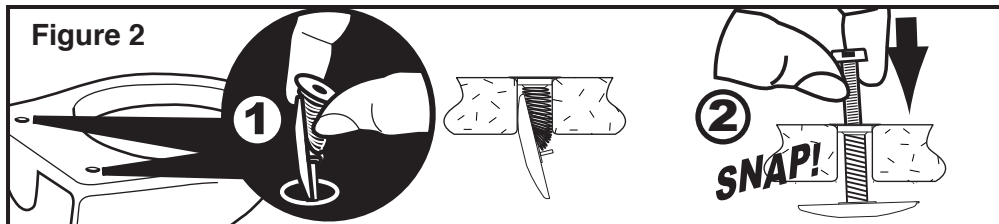


Figure 3

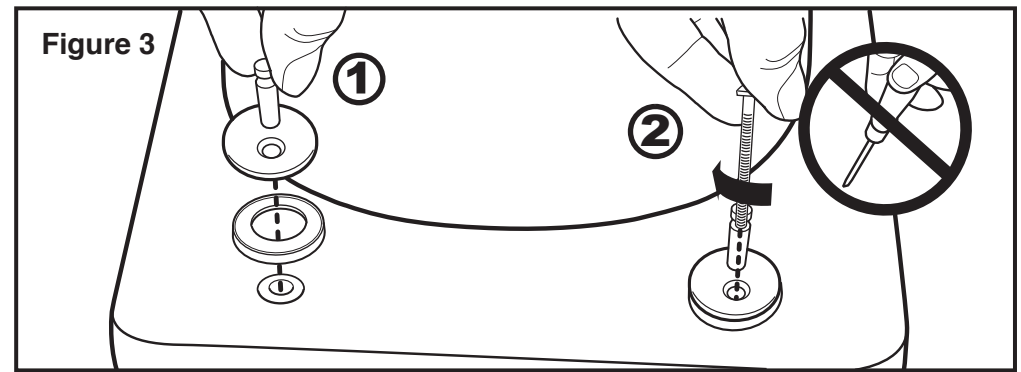


Figure 4

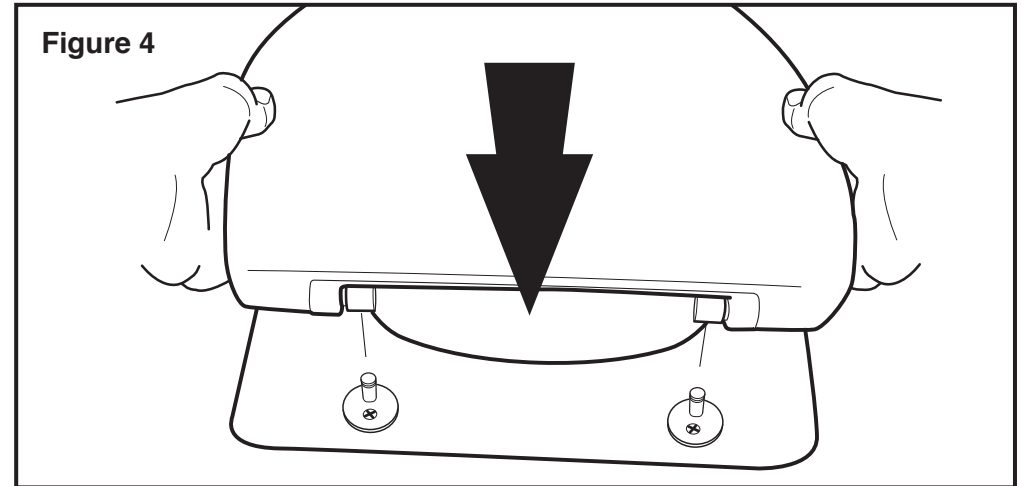


Figure 5

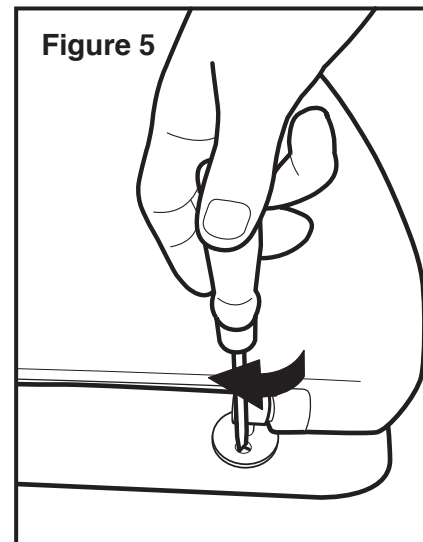


Figure 6

