

**UK Assembly instructions.**  
Please read the instructions first. We reserve the right to change product specifications due to possible technical improvements.  
**Caution:** Always use appropriate fixings to suit your type of wall.

**D Montageanleitung.**  
Bitte lesen Sie zuerst die Montageanleitung. Im Interesse der Entwicklung und Verbesserung von Produkten behält sich Ideal Standard International das Recht vor, Produktspezifikationen gelegentlich ohne Ankündigung zu ändern.  
**Achtung:** Bitte verwenden Sie für ihr Mauerwerk geeignetes Befestigungsmaterial.

**BG Инструкции за монтаж.**  
Преди монтажа, първо прочетете инструкциите. Запазваме си правото да променяме спецификациите на продуктите поради технически подобрения.  
**Внимание:** Винаги използвайте подходящи крепежни елементи, според вида на стената.

**PL Instrukcja obsługi.**  
Przed rozpoczęciem pracy przeczytaj uważnie instrukcję obsługi. Zastrzegamy sobie prawo do zmian w specyfikacji technicznej produktu.  
**Uwaga:** Używaj zestawów montażowych odpowiednich do rodzaju ściany.

**E Instrucciones de montaje:**  
Por favor, lea primero detenidamente las instrucciones. Se reserva el derecho a cambiar las especificaciones por posibles mejoras técnicas.  
**¡Atención!** Use siempre las fijaciones apropiadas dependiendo del tipo de pared.

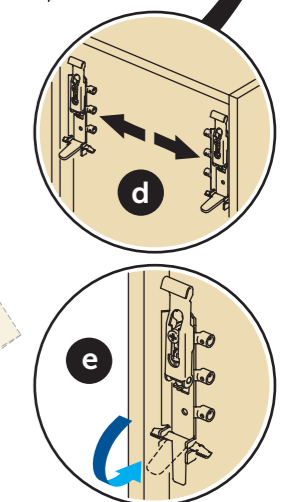
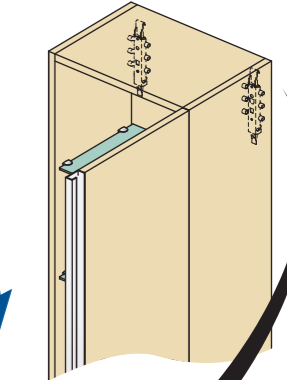
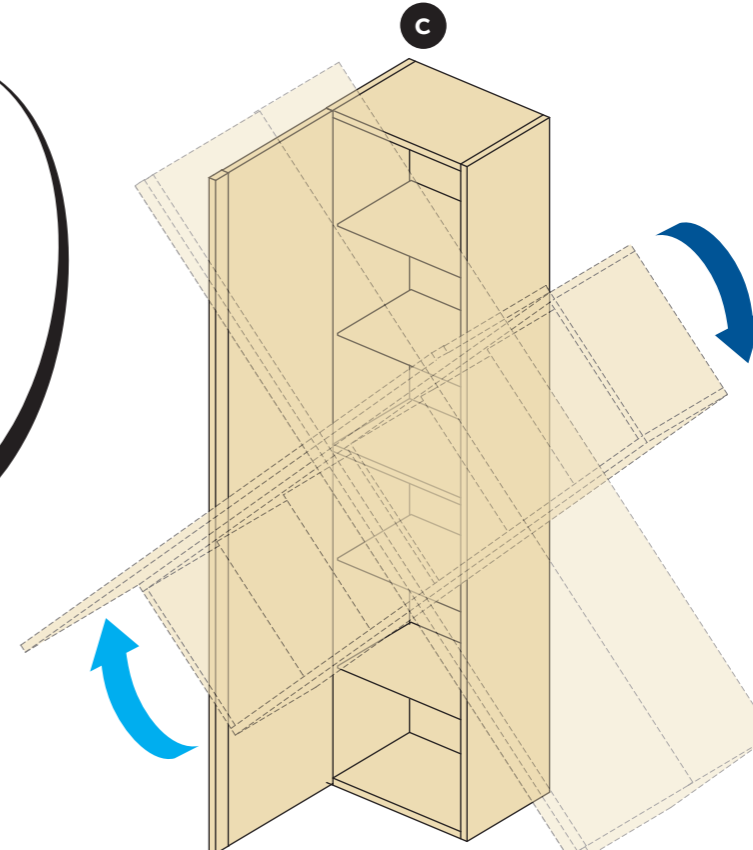
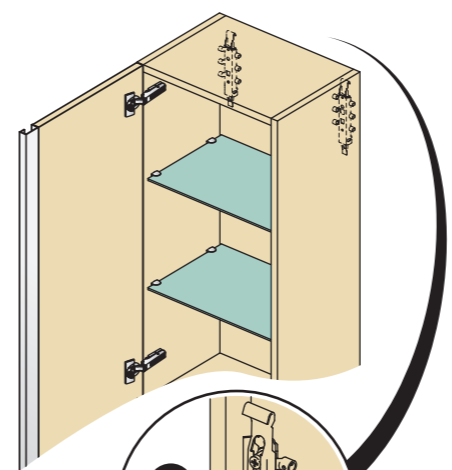
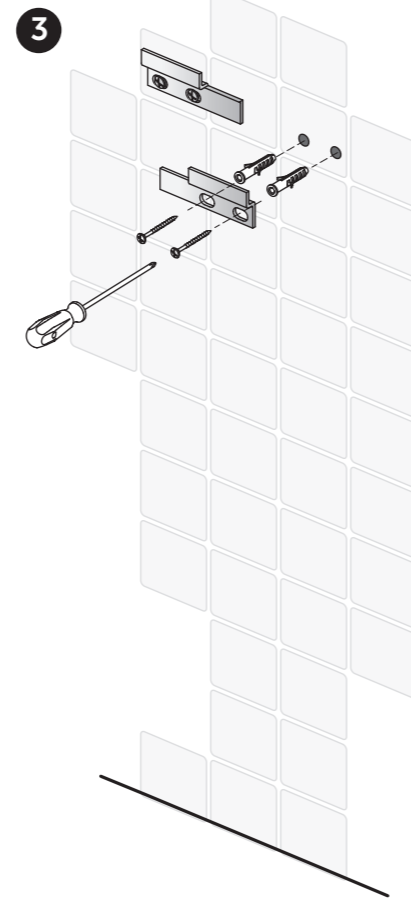
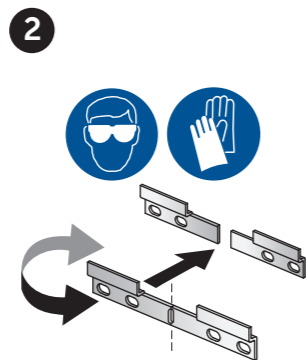
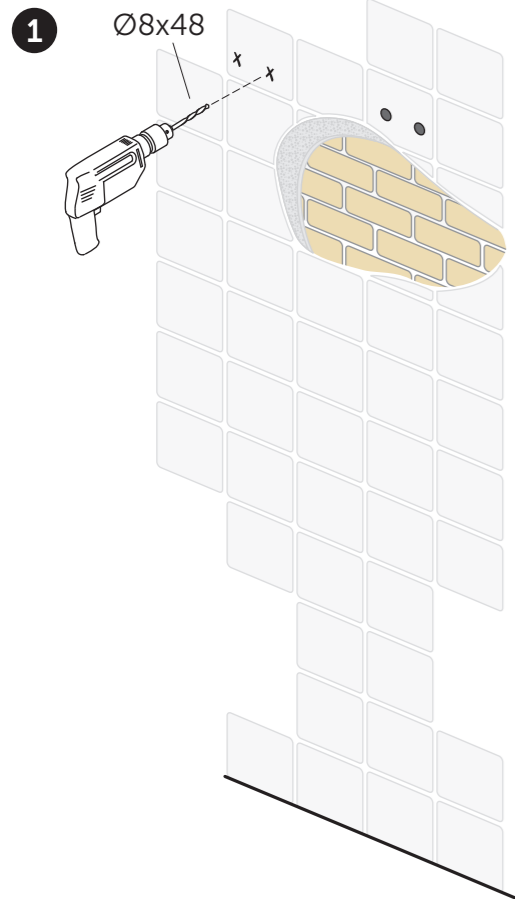
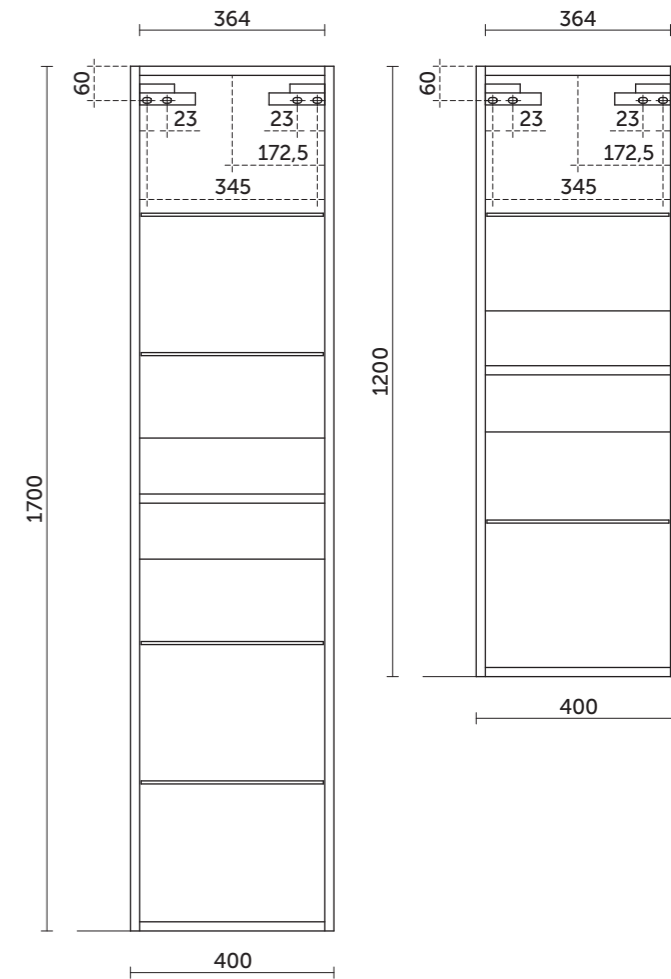
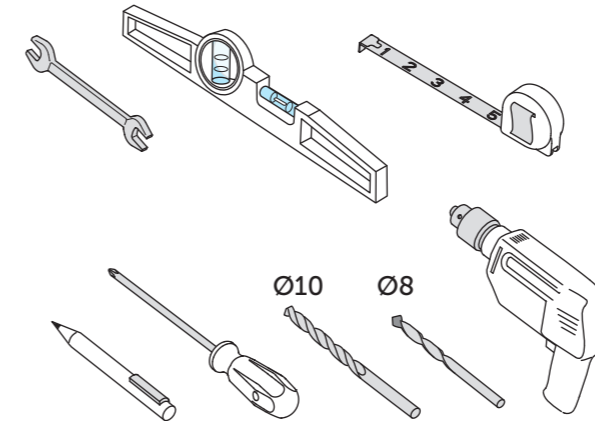
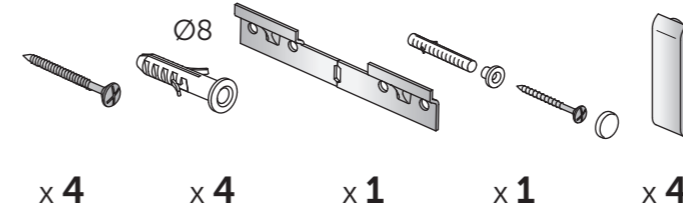
**I Istruzioni di montaggio.**  
Leggere prima le istruzioni. Ci riserviamo il diritto di apportare eventuali modifiche tecniche.  
**Attenzione:** I fissaggi devono essere scelti a seconda del tipo di muro.

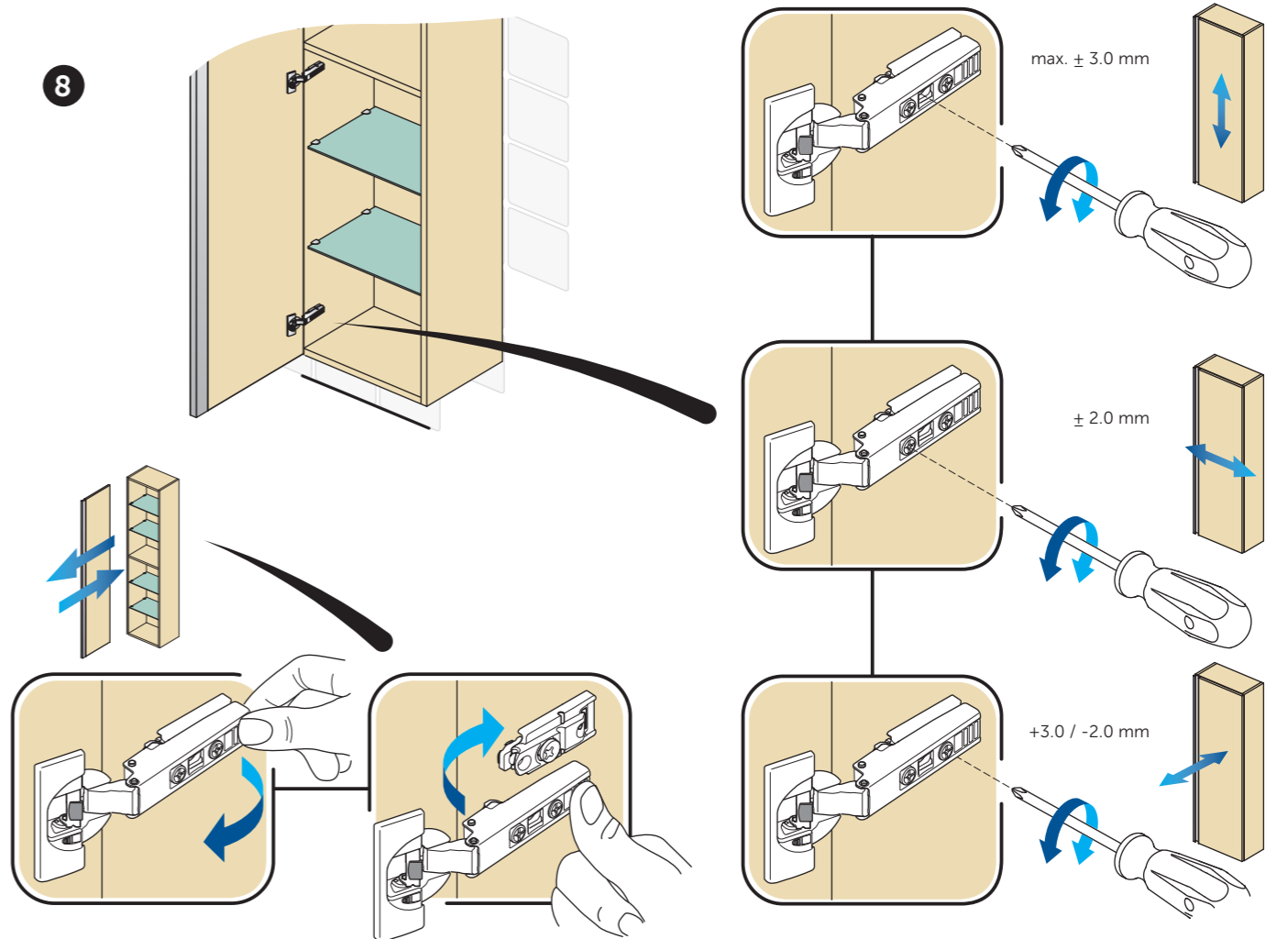
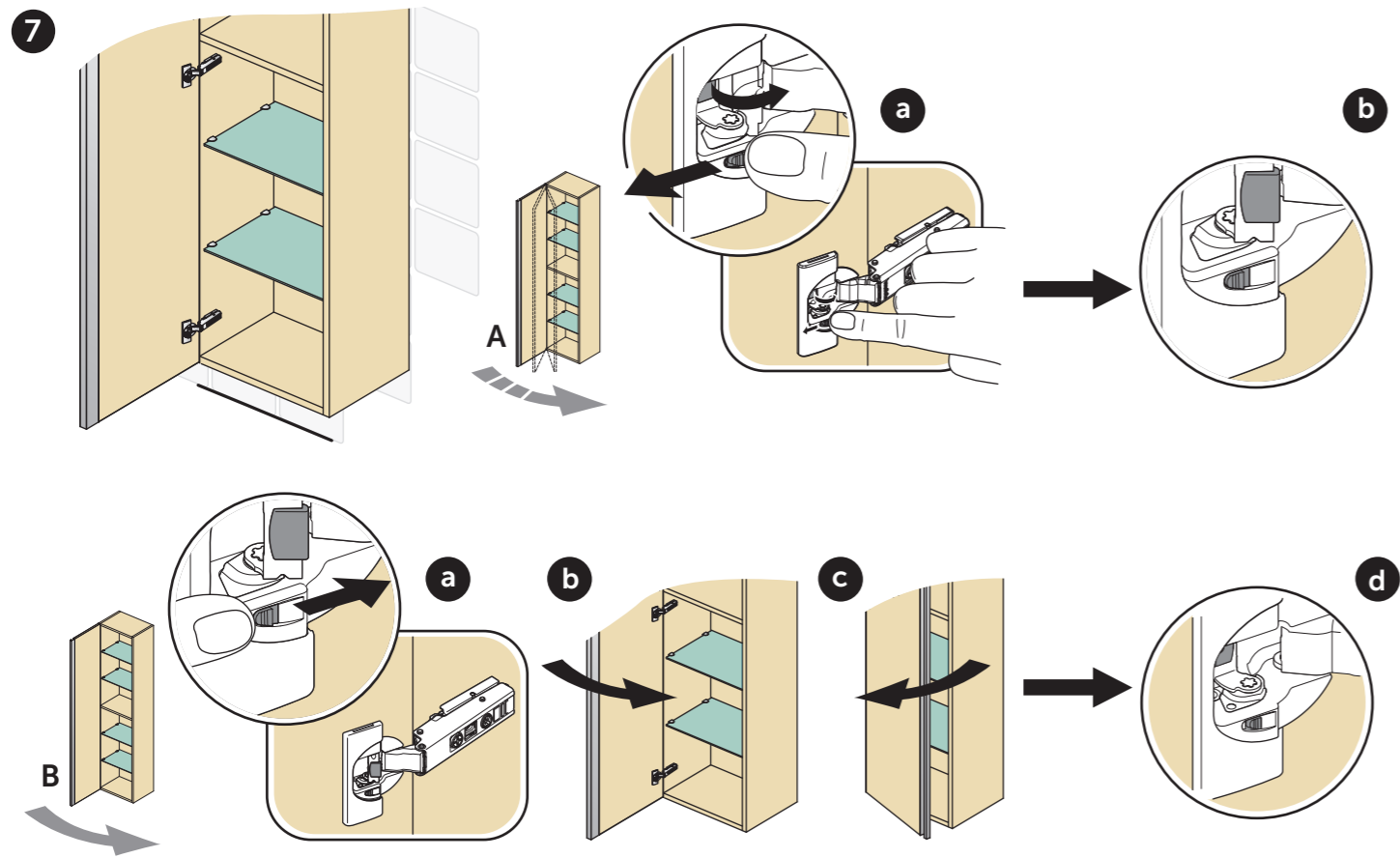
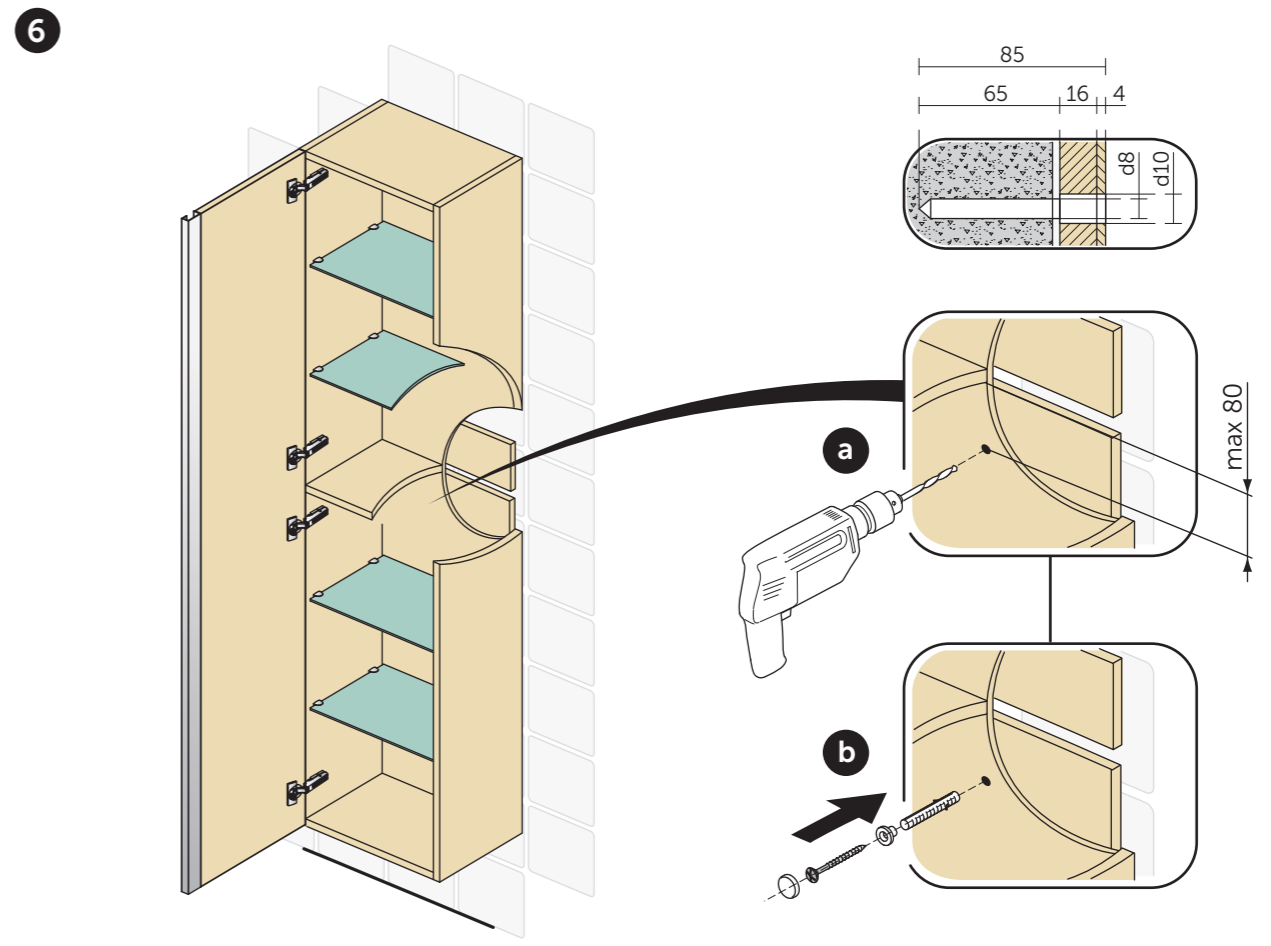
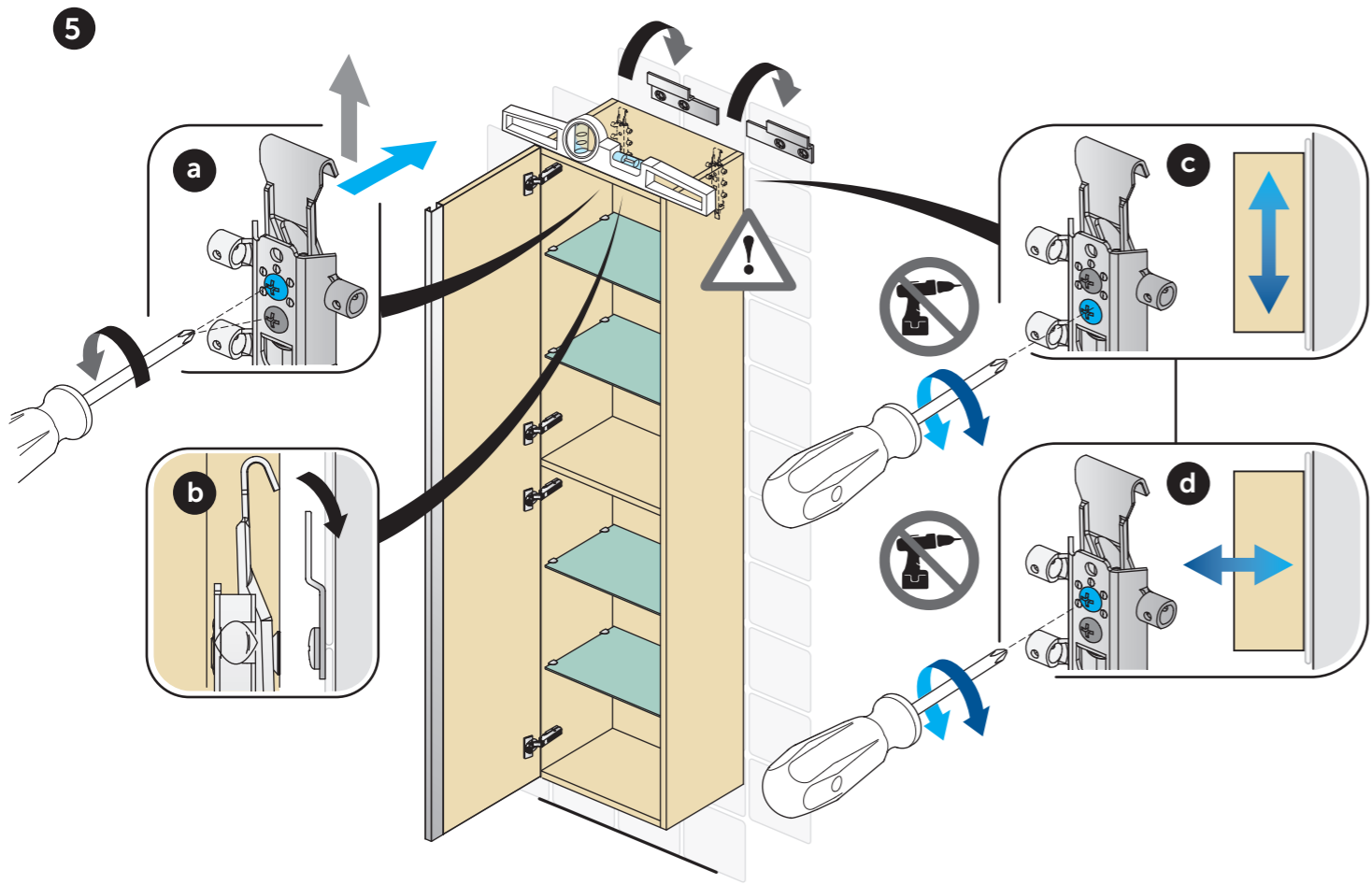
**RU Инструкции по установке.**  
Пожалуйста, перед установкой ознакомьтесь с инструкцией. Мы оставляем за собой право изменять характеристики продуктов ввиду возможных технических усовершенствований.  
**Внимание:** Всегда используйте подходящий для Вашего типа стены крепеж.

**F Notice de montage.**  
Lisez d'abord la notice de montage. Sous réserve de modifications techniques.  
**! Attention:** Utilisez toujours une fixation correcte pour votre type de mur.

**CZ Pokyny k instalaci.**  
Před montážísi, prosím, pozorně přečtěte montážní návod. Společnost Ideal Standard International si vyhrazuje právo změnit specifikace výrobků z důvodů technického vývoje.  
**Pozor:** Použijte prosím takové montážní prvky, které odpovídají typu stěny.

**GR Οδηγίες Τοποθέτησης.**  
Παρακαλώ διαβάστε πρώτα τις οδηγίες. Η Ideal Standard International διατηρεί το δικαίωμα να αλλάξει τις προδιαγραφές των προϊόντων λόγω πιθανών τεχνικών βελτιώσεων.  
**Προσοχή:** Για την καλύτερη εγκατάσταση προτείνουμε να χρησιμοποιείτε πάντα τα κατάλληλα στηρίγματα.





## Product sheet

#### Types of materials

- Basin unit, column, worktop : melamine paper chipboard panel class E1
- Front bar : anodized and brushed aluminium
- Reinforcement bracket : Zinc-coated steel
- Drawer : ABS with steel runners soft-closing system, MDF base panel class E1
- Hinges : steel with Soft-closing
- Shelf : glass 6 mm
- Handle : powder painted aluminium

#### Technical specifications

#### Dimensions

#### Weight

- Safety
- Do not place more than a 2 Kg load on each shelf
- Do not apply pressure of more than 15 Kg on open drawers
- Product with electrical connections should only be installed and fixed by qualified electrician, who will install it in accordance to the installation manuals and the norms in force in the country.
- Incorrect installation and/or use of the item for any purpose other than that for which it was intended can be dangerous or cause possible injury to users.
- When cleaning or using the bathroom, please take care for all furniture having integrated lights or other electric parts, to avoid direct contact with water or moisture.
- The products should be installed in a bathroom with adequate ventilation.

#### Technical specifications

#### Dimensions

#### Weight

- Maintenance and Cleaning
- Wipe down with a damp cloth or a gentle detergent and dry carefully.
- Do not use any solvents or abrasive substances for cleaning. Spilt liquids must be wiped up immediately using a cloth; thereafter, dry the surface with a clean dry cloth.

#### Technical specifications

#### Dimensions

#### Weight

#### Technical specifications

#### Dimensions

#### Weight

#### Technical specifications

#### Dimensions

#### Weight

#### Technical specifications

#### Dimensions

#### Weight

#### Technical specifications

#### Dimensions

#### Weight

#### Technical specifications

#### Dimensions

#### Weight

#### Technical specifications

#### Dimensions

#### Weight

#### Technical specifications

#### Dimensions

#### Weight

#### Technical specifications

#### Dimensions

#### Weight

#### Technical specifications

#### Dimensions

#### Weight

#### Technical specifications

#### Dimensions

#### Weight

#### Technical specifications

#### Dimensions

#### Weight

#### Technical specifications

#### Dimensions

#### Weight

#### Technical specifications

#### Dimensions

#### Weight

#### Technical specifications

#### Dimensions

#### Weight

#### Technical specifications

#### Dimensions

#### Weight

#### Technical specifications

#### Dimensions

#### Weight

#### Technical specifications

#### Dimensions

#### Weight

#### Technical specifications

## Ficha de producto

#### Technical specifications

#### Dimensions

#### Weight

#### Technical specifications

#### Dimensions

#### Weight

#### Technical specifications

#### Dimensions

#### Weight

#### Technical specifications

#### Dimensions

#### Weight

#### Technical specifications

#### Dimensions

#### Weight

#### Technical specifications

#### Dimensions

#### Weight

#### Technical specifications

#### Dimensions

#### Weight

#### Technical specifications

#### Dimensions

#### Weight

#### Technical specifications

#### Dimensions

#### Weight

#### Technical specifications

#### Dimensions

#### Weight

#### Technical specifications

#### Dimensions

#### Weight

#### Technical specifications

#### Dimensions

#### Weight

#### Technical specifications

#### Dimensions

#### Weight

#### Technical specifications

#### Dimensions

#### Weight

#### Technical specifications

#### Dimensions

#### Weight

#### Technical specifications

#### Dimensions

#### Weight

#### Technical specifications

#### Dimensions

#### Weight

#### Technical specifications

#### Dimensions

#### Weight

#### Technical specifications

#### Dimensions

#### Weight

#### Technical specifications

#### Dimensions

#### Weight

#### Technical specifications

#### Dimensions

#### Weight

#### Technical specifications

#### Dimensions

#### Weight

#### Technical specifications

#### Dimensions

#### Weight

#### Technical specifications

#### Dimensions

#### Weight

#### Technical specifications

#### Dimensions

#### Weight

#### Technical specifications

#### Dimensions

#### Weight

#### Technical specifications

## Fiche Produit

#### Technical specifications

#### Dimensions

#### Weight

#### Technical specifications

#### Dimensions

#### Weight

#### Technical specifications

#### Dimensions

#### Weight

#### Technical specifications

#### Dimensions

#### Weight

#### Technical specifications

#### Dimensions

#### Weight

#### Technical specifications

#### Dimensions

#### Weight

#### Technical specifications

#### Dimensions

#### Weight

#### Technical specifications

#### Dimensions

#### Weight

#### Technical specifications

#### Dimensions

#### Weight

#### Technical specifications

#### Dimensions

#### Weight

#### Technical specifications

#### Dimensions

#### Weight

#### Technical specifications

#### Dimensions

#### Weight

#### Technical specifications

#### Dimensions

#### Weight

#### Technical specifications

#### Dimensions

#### Weight

#### Technical specifications

#### Dimensions

#### Weight

#### Technical specifications

#### Dimensions

#### Weight

#### Technical specifications

#### Dimensions

#### Weight

#### Technical specifications

#### Dimensions

#### Weight

#### Technical specifications

#### Dimensions

#### Weight

#### Technical specifications

#### Dimensions

#### Weight

#### Technical specifications

#### Dimensions

#### Weight

#### Technical specifications

#### Dimensions

#### Weight

#### Technical specifications

#### Dimensions

#### Weight

#### Technical specifications

#### Dimensions

#### Weight

#### Technical specifications

#### Dimensions

#### Weight

#### Technical specifications

#### Dimensions

#### Weight

#### Technical specifications

## Produktinformation

#### Art der verwendeten Materialien

- Waschtischunterschrank, Hochschrank, Konsole: melaminbeschichtete Spanplatte
- Querstrebe : eloxiertes gebürtetetes Aluminium
- Verstärkungswinkel : verzinkter Stahl
- Auszüge : ABS mit Stahllaufschiene und SoftClosing System
- Türen mit SoftClosing Scharnieren
- Glasböden in 6 mm
- Griff : pulverbeschichtetes Aluminium

#### Technical specifications

#### Dimensions

#### Weight

#### Technical specifications

#### Dimensions

#### Weight

#### Technical specifications

#### Dimensions

#### Weight

#### Technical specifications

#### Dimensions

#### Weight

#### Technical specifications

#### Dimensions

#### Weight

#### Technical specifications

#### Dimensions

#### Weight

#### Technical specifications

#### Dimensions

#### Weight

#### Technical specifications

#### Dimensions

#### Weight

#### Technical specifications

#### Dimensions

#### Weight

#### Technical specifications

#### Dimensions

#### Weight

#### Technical specifications

#### Dimensions

#### Weight

#### Technical specifications

#### Dimensions

#### Weight

#### Technical specifications

#### Dimensions

#### Weight

#### Technical specifications

#### Dimensions

#### Weight

#### Technical specifications

#### Dimensions

#### Weight

#### Technical specifications

#### Dimensions

#### Weight

#### Technical specifications

#### Dimensions

#### Weight

#### Technical specifications

#### Dimensions

#### Weight

#### Technical specifications

#### Dimensions

#### Weight

#### Technical specifications

#### Dimensions

#### Weight

