

☐ **CARE AND CLEANING INSTRUCTIONS**

- The seat and cover should be cleaned using warm soapy water.
- Do not use aggressive or abrasive cleaners as this may scratch the surface of the seat.
- The hinges should be cleaned using soap, or a mild detergent. After cleaning the hinges should be rinsed in clean water and dried.
- Never use bleach, concentrated cleaners or acids on the hinges as this will cause discolouring and pitting.
- Do not leave bleach in the toilet bowl with the cover closed because this may cause discolouration of the seat and hinges.
- Take care not to splash the hinges when using bleach in the toilet bowl.

The Bathroom Works
National Avenue
Kingston upon Hull
HU5 4HS
England
Telephone: (01482) 346461
Telefax: (01482) 445886.

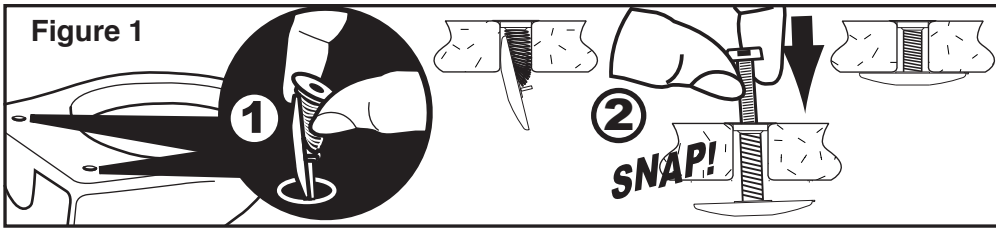
CUSTOMER CARE HELPLINE
0870 1296085
FAX LINE 01482 499611
ukcustcare@idealstandard.com

Ideal Standard (UK) Ltd. pursues a policy of continuing improvement in design and performance of its products. The right is, therefore, reserved to vary specifications without notice.

4513 05/08

Toilet Seat Installation

Important Care and
Installation Instructions,
Please retain for future reference.



To fit the sprung retainers into the pan, clip the tab - on the end of the wings - under the head, insert into the holes and snap into place with a screw (Figure 1). Remove the screw.

Ensure that the plastic sleeves, which lock the seat and cover hinge straps together, are present, (Figure 2), before inserting the hinge pins into the sleeves.

Check the orientation of the hinges, the hinges on this model throw forwards, (Figure 3). This ensures correct seat alignment.

Place a plastic washer over each hole (Figure 4), then lower the seat and cover onto the pan before inserting and tightening the screws with a screwdriver (Figure 5).

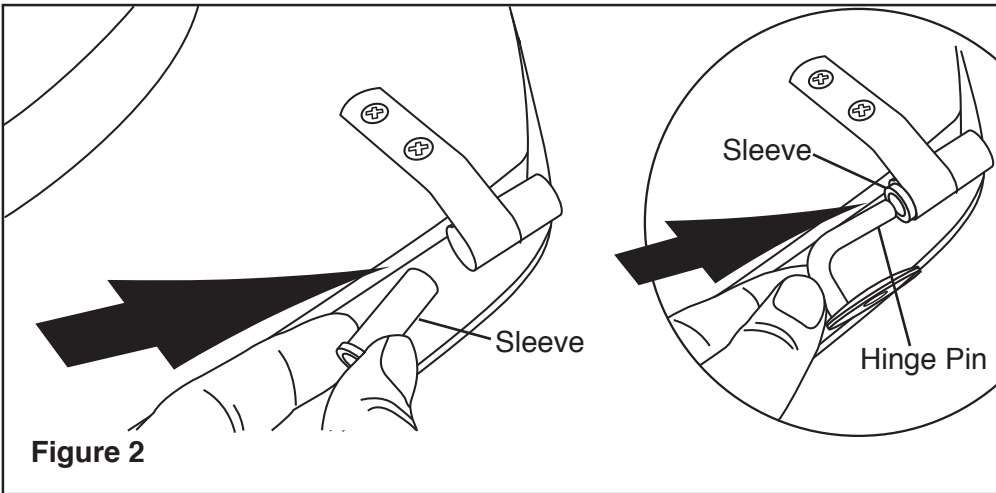


Figure 2

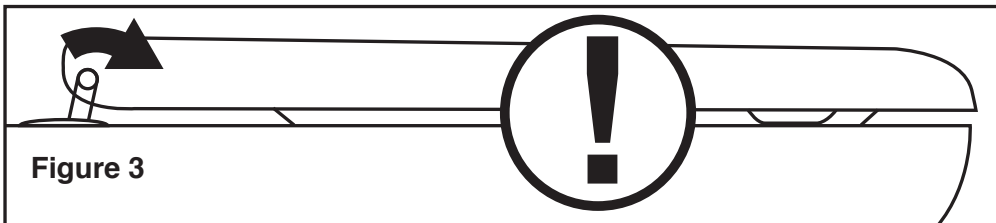


Figure 3

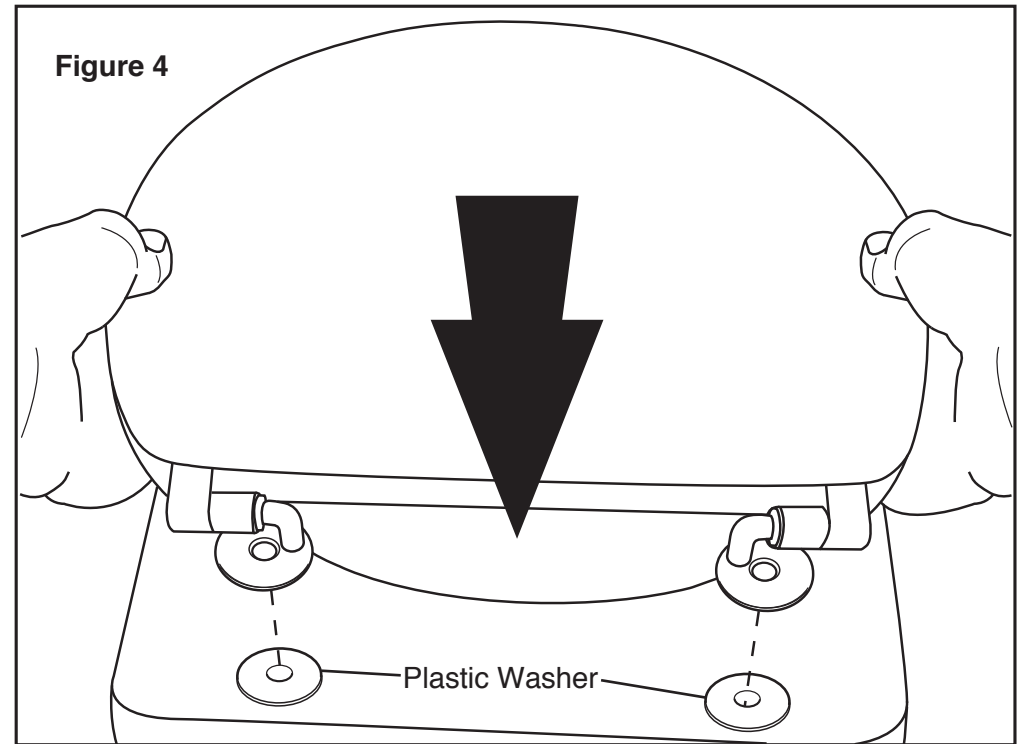


Figure 4

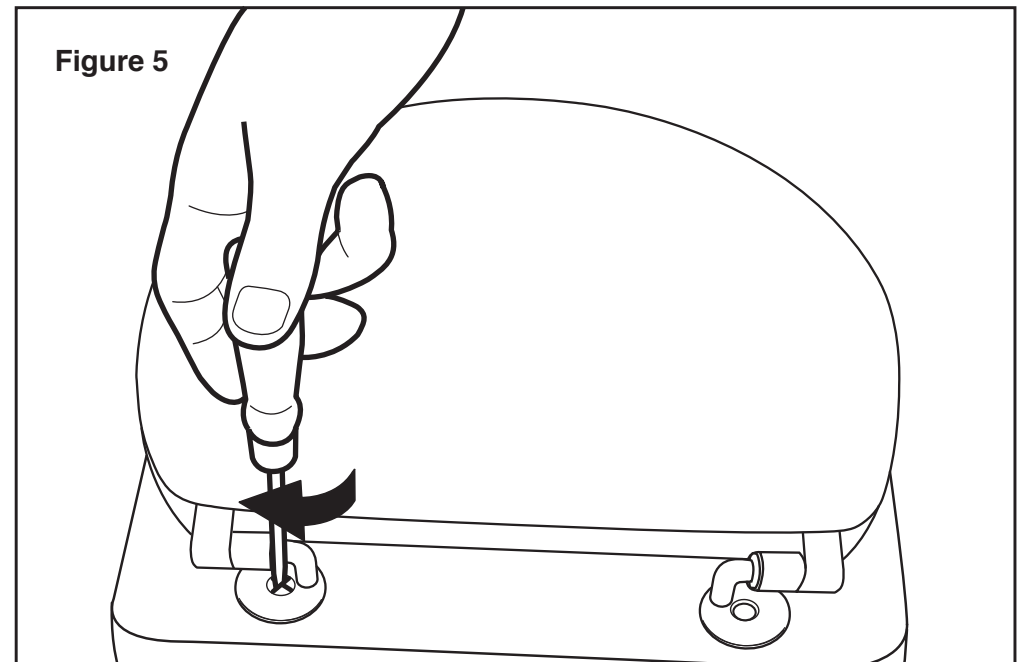


Figure 5