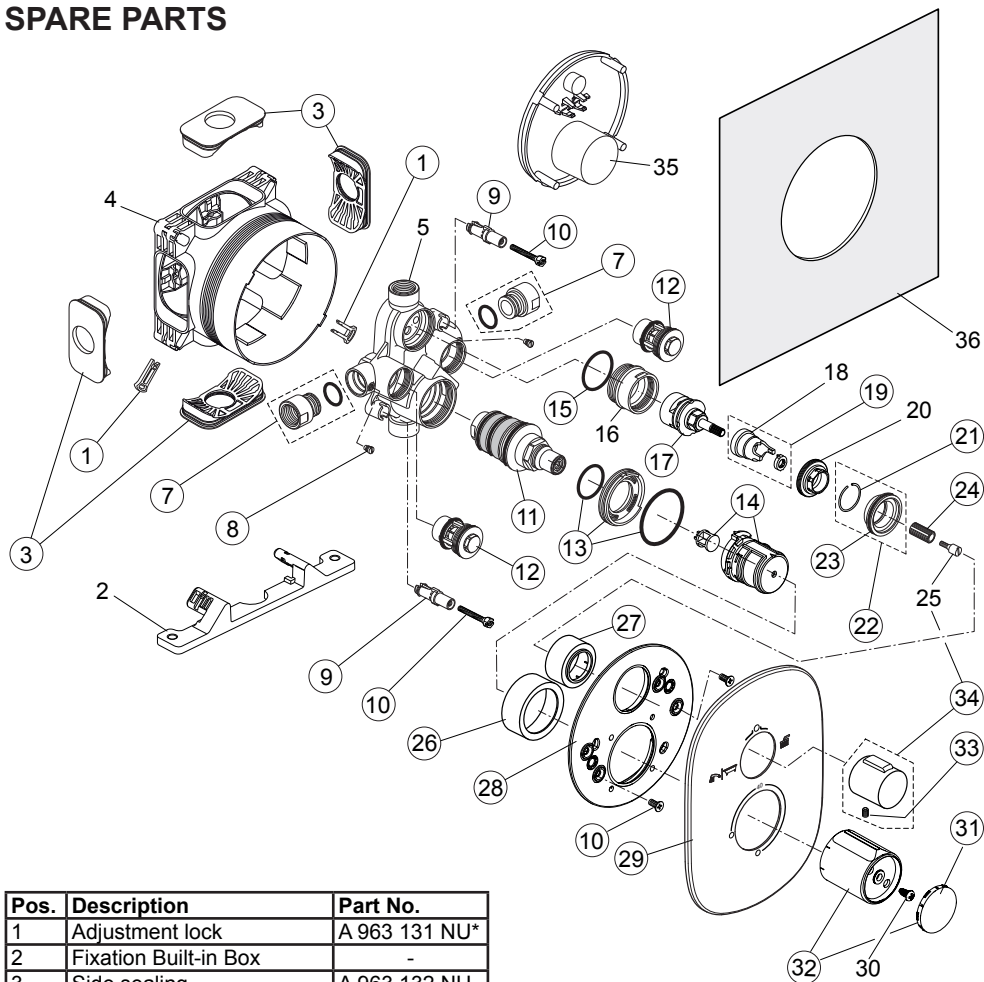


## SPARE PARTS



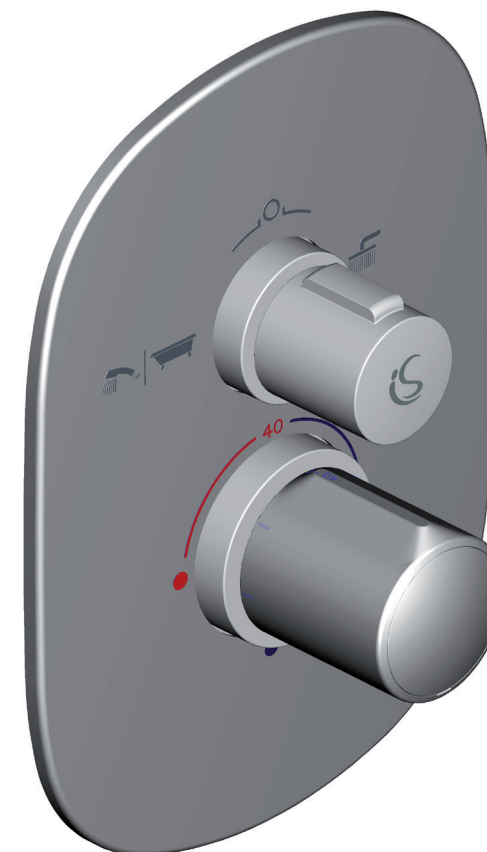
## BATH/SHOWER BUILT-IN THERMOSTAT

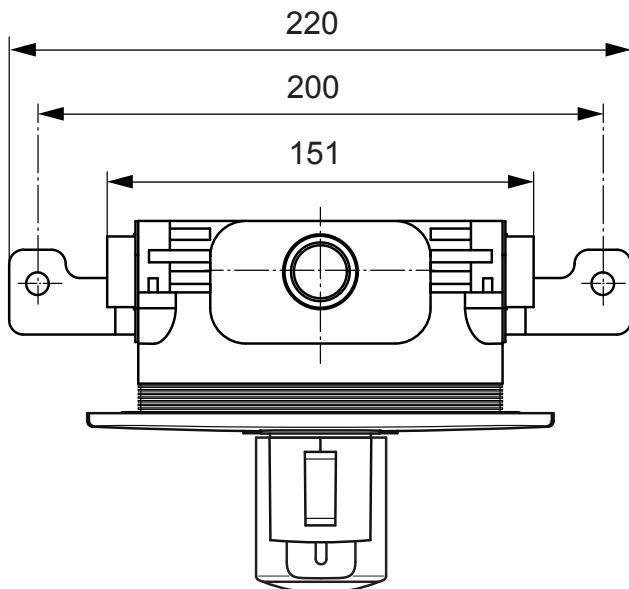
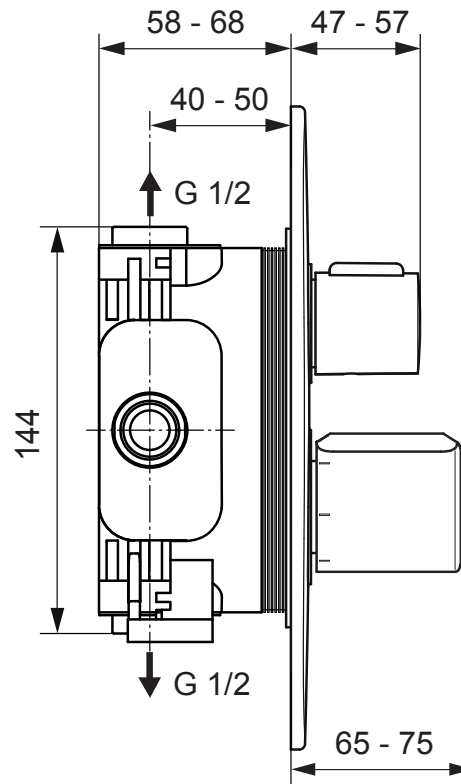
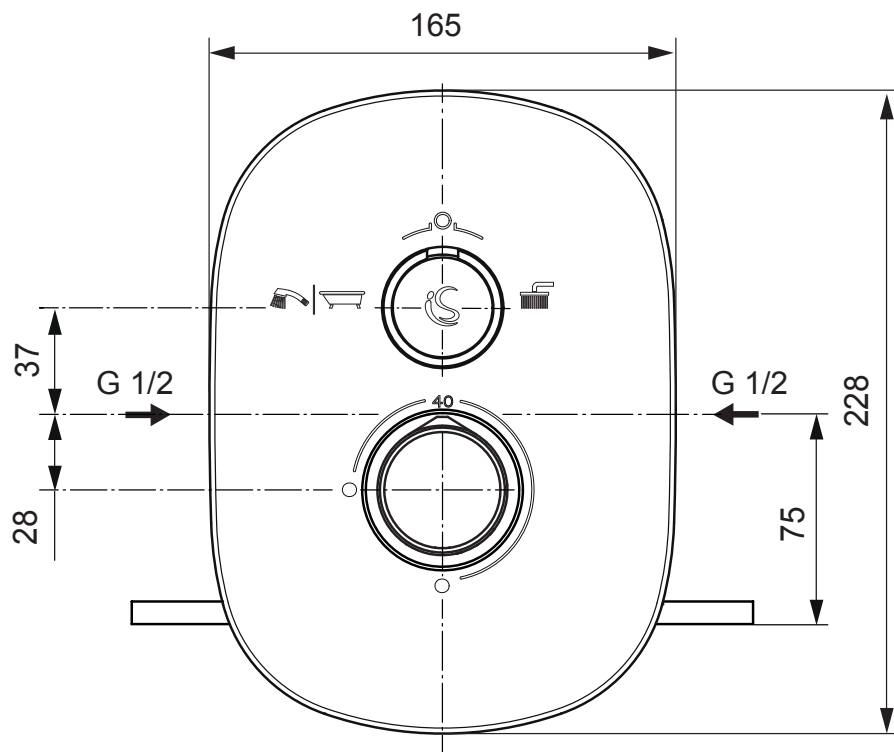
**A 6266 AA**

Pos.	Description	Part No.
1	Adjustment lock	A 963 131 NU*
2	Fixation Built-in Box	-
3	Side sealing	A 963 132 NU
4	Built-in box	-
5	Body Thermostat	-
7	Connection nipple cpl.	F 960 889 NU
8	Thread pin M5 x 5,5	A 961 183 NU
9	Adapter screw	F 960 903 NU
10	Screw set complete	F 960 904 NU*
11	Thermostat cartridge	F 960 905 NU
12	None return-valve DN20	F 960 906 NU
13	Holder f. escut. Temp.	F 960 907 NU
14	Temp.-adjustment compl.	F 960 908 NU
15	O - ring Ø 34,65 x 1,78	A 962 848 NU
16	Thread ring M40 x 1,5	-
17	Stop valve with diverter	A 962 480 NU
18	Clamp cover	-
19	Clamp cover with washer	A 962 481 NU
20	Clamping nut M36 x 1	-
21	Snap ring	A 962 368 NU

22	Holder f. escutcheon Vol.	F 960 909 NU
23	O - ring Ø 34 x 2	A 960 183 NU
24	Handle insert	A 963 196 NU
25	Fixation screw M4/Ø8/22,5	-
26	Cover/Cap Temperature	F 960 910 AA
27	Cover/Cap Volume Contr.	F 960 911 AA
28	Escutcheon holder compl.	F 961 108 NU
29	Escutcheon with symbols	F 961 006 AA
30	Ejot PT-Screw KB50x10	-
31	Handle cap	A 962 069 AA*
32	Temp. handle + cap	A 962 070 AA
33	Thread pin M5 x 8 DIN913	A 960 229 NU
34	Volume handle + pos. 25	F 960 914 AA
35	Cover for built-in box	-
36	Sealing fleece	-

\* Universal-Set - not all parts are needed





**DIMENSIONS**