

## CARE AND CLEANING INSTRUCTIONS

- The seat and cover should be cleaned using warm soapy water.
- Do not use aggressive or abrasive cleaners as this may scratch the surface of the seat.
- The hinges should be cleaned using soap, or a mild detergent. After cleaning the hinges should be rinsed in clean water and dried.
- Never use bleach, concentrated cleaners or acids on the hinges as this will cause discolouring and pitting.
- Do not leave bleach in the toilet bowl with the cover closed because this may cause discolouration of the seat and hinges.
- Take care not to splash the hinges when using bleach in the toilet bowl.

The Bathroom Works  
National Avenue  
Kingston upon Hull  
HU5 4HS  
England  
Telephone: (01482) 346461  
Telefax: (01482) 445886.

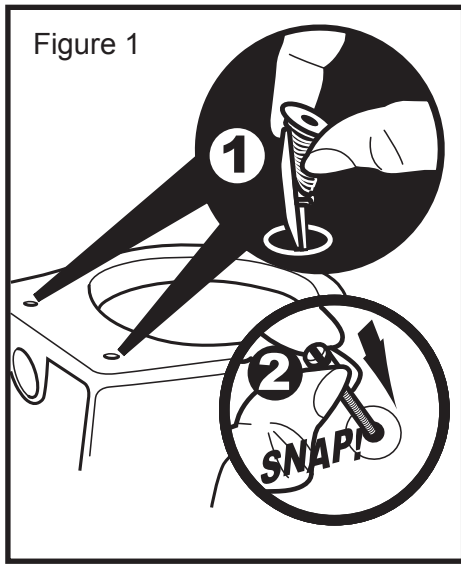
**CUSTOMER CARE HELPLINE**  
**0870 1296085**  
**FAX LINE 01482 499611**  
ukcustcare@idealstandard.com

Ideal Standard (UK) Ltd. pursues a policy of continuing improvement in design and performance of its products. The right is, therefore, reserved to vary specifications without notice.

4601 09/08

## Toilet Seat Installation

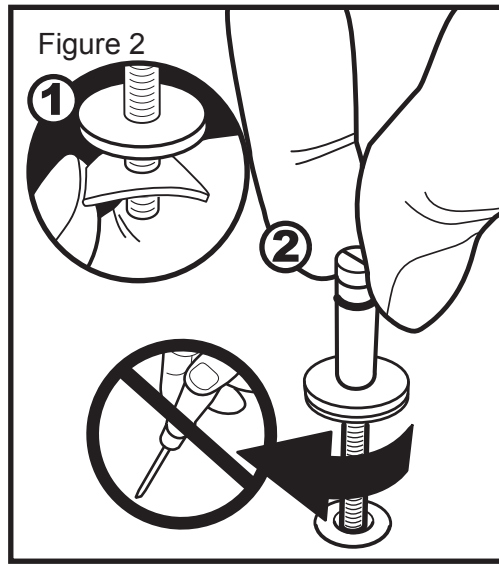
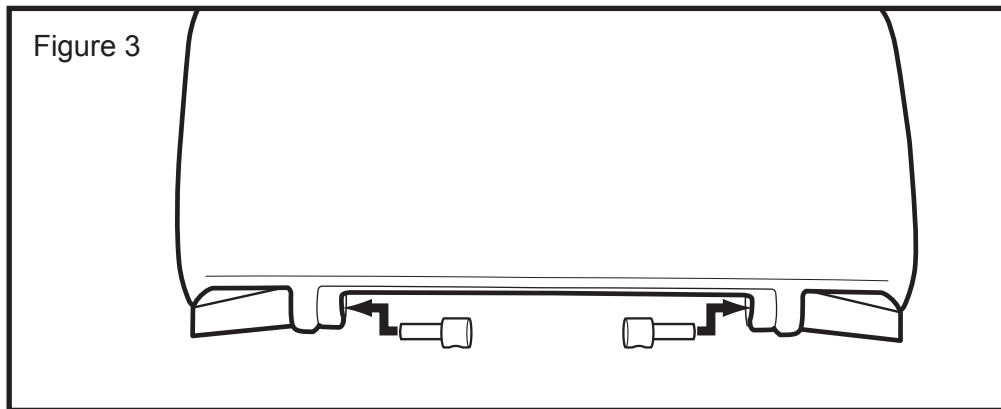
Important Care and  
Installation Instructions,  
Please retain for future reference.



Insert the sprung retainers into the pan. Clip the tab - on the end of the wings - under the washer, before fitting through the WC and snapping into place with the hinge pillar bolt (Figure 1).

Add the metal washer and then the plastic washer to the hinge pillar bolts. Insert into the pan and tighten them FINGER TIGHT only (Figure 2).

Insert the hinge pins into the seat, with the locating holes facing downwards (Figure 3).



Lower the seat onto the hinges. Centralise the seat and hinges and align the seat with the pan (Figure 4).

Carefully remove the seat (Figure 5), ensuring that the hinge pillars remain in position

Tighten the hinge pillars to the pan with a screwdriver (Figure 6).

Replace the seat (Figure 7), tighten the hinge grub screws (Figure 8) and ensure that the assembly is secure before use.

