

□ **CARE AND CLEANING INSTRUCTIONS**

- The seat and cover should be cleaned using warm soapy water.
- Do not use aggressive or abrasive cleaners as this may scratch the surface of the seat.
- The hinges should be cleaned using soap, or a mild detergent. After cleaning the hinges should be rinsed in clean water and dried.
- Never use bleach, concentrated cleaners or acids on the hinges as this will cause discolouring and pitting.
- Do not leave bleach in the toilet bowl with the cover closed because this may cause discolouration of the seat and hinges.
- Take care not to splash the hinges when using bleach in the toilet bowl.

The Bathroom Works
National Avenue
Kingston upon Hull
HU5 4HS
England
Telephone: (01482) 346461
Telefax: (01482) 445886.

CUSTOMER CARE HELPLINE
01482 499685
FAX LINE 01482 499611

Ideal Standard Plumbing (UK) Ltd. pursues a policy of continuing improvement in design and performance of its products.
The right is, therefore, reserved to vary specifications without notice. 4486 01/06

Toilet Seat Installation Studio and Sophie

Important Care and
Installation Instructions,
Please retain for future reference.

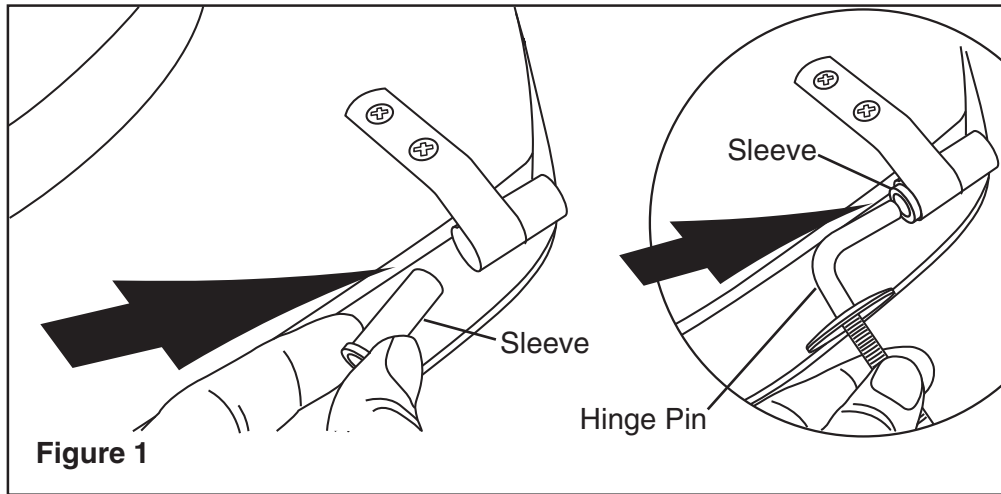


Figure 1

Ensure that the plastic sleeves, that lock the seat and cover hinge straps together, are present, Figure 1, before inserting the hinge pins into the sleeves.

Check the orientation of the hinges, The hinges on this model throw forwards, Figure 2. This ensures that the seat lines up correctly.

Fit rubber centralising washers into the holes in the pan and lower the seat and cover, Figure 3, ensuring that the hinges are inserted in the holes in the centralising washers.

Firstly fit a plastic coated washer, then a steel spring washer and nut to the thread of each hinge, Figure 4, before tightening with the tool provided.

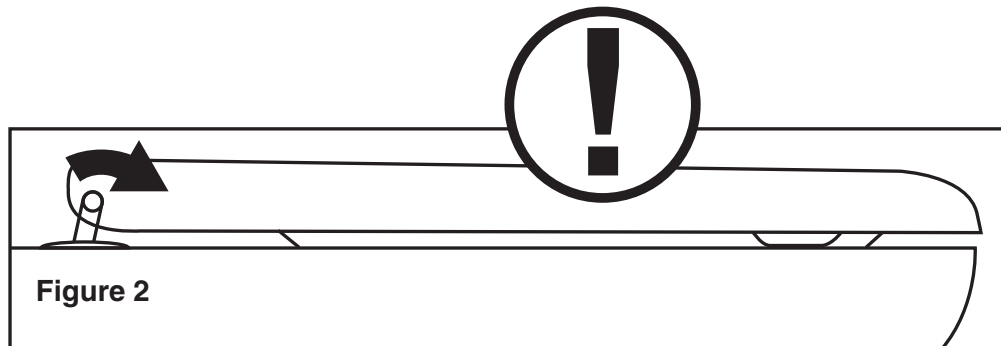


Figure 2

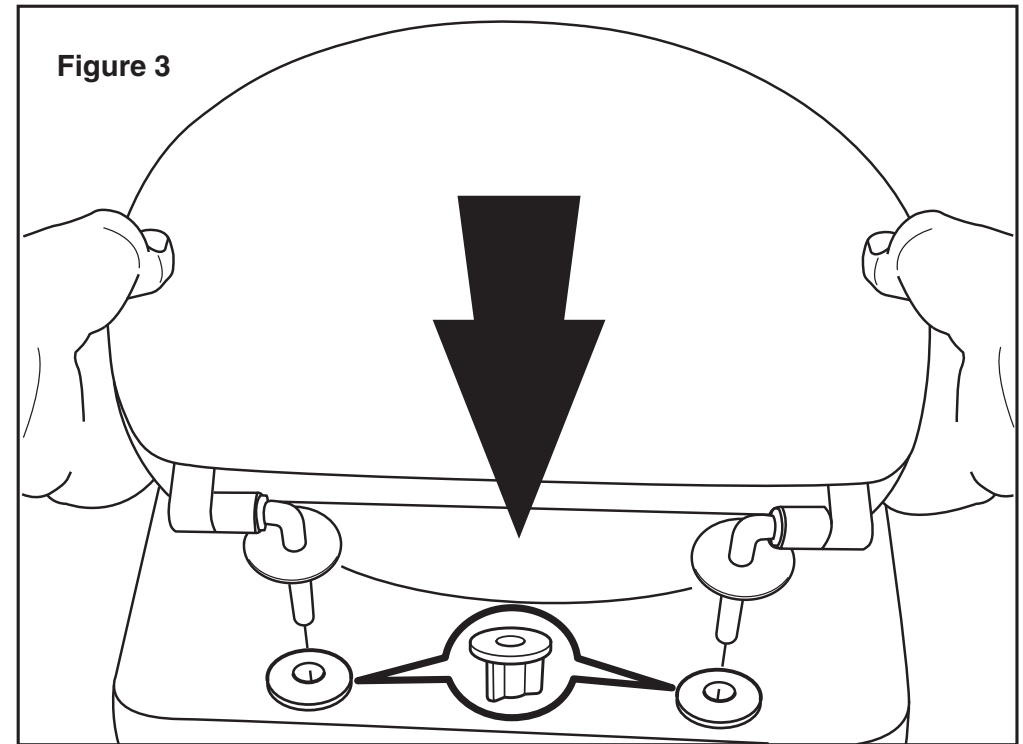


Figure 3

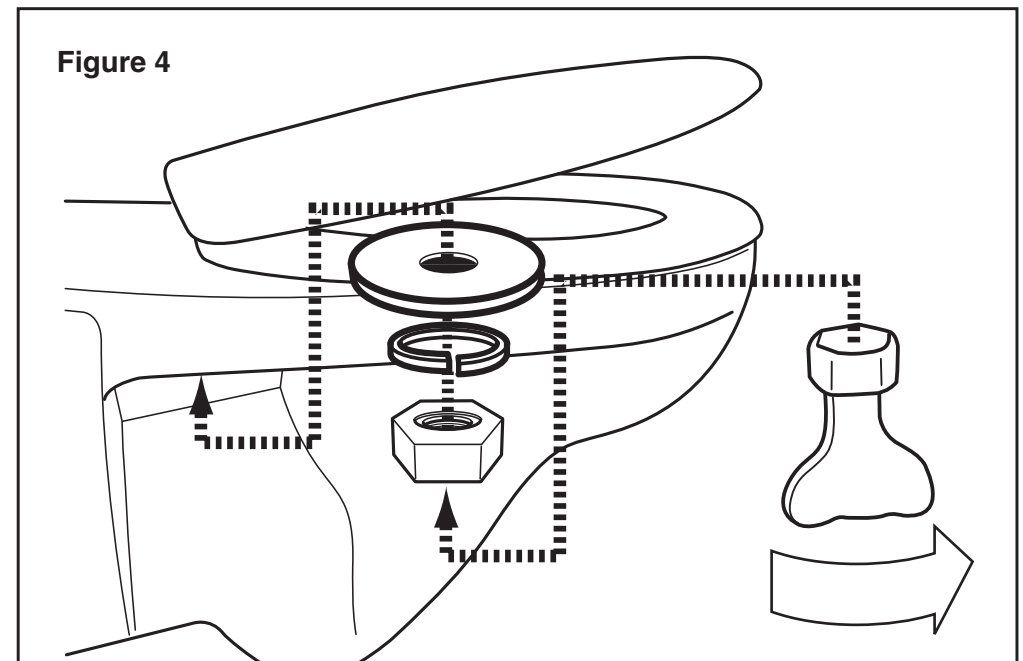


Figure 4