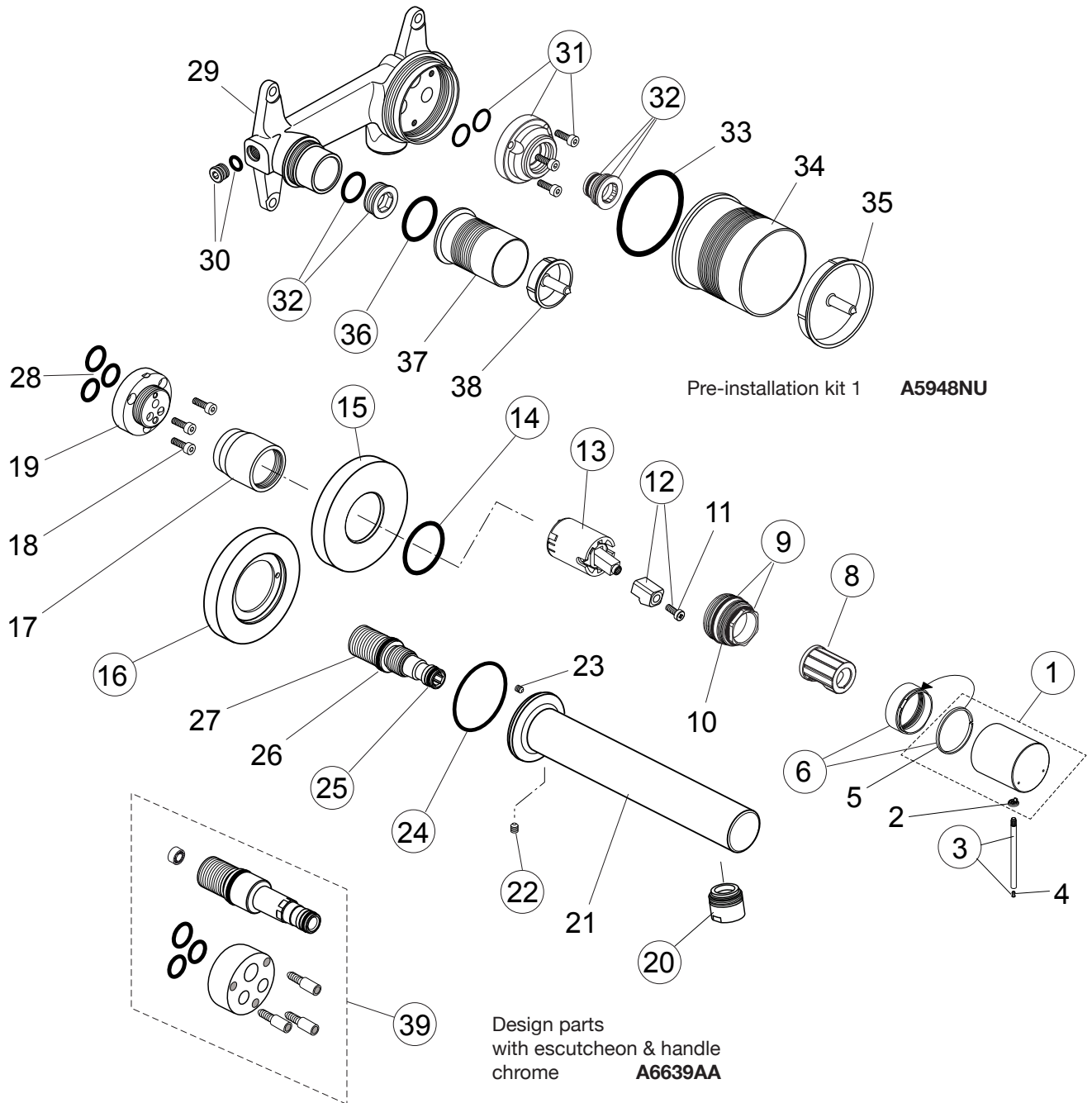


Produced since: **Sept. 2015**



Pos.	Description	Part-Number	Qty.	Pos.	Description	Part-Number	Qty.
1	Handle cap complete	F 961 007 AA	1 Set	21	Spout		
2	Handle cap insert			22	Thread pin M5 x 5		
3	Lever stainl. steel polished	F 960 988 NU	1 Set	23	Thread pin M3 x 5 DIN915		
4	Cover for lever			24	O - ring Ø 41 x 1,78	A 961 863 NU	1 pcs
5	Sliding ring			25	O - ring Ø 10 x 2	A 963 495 NU	2 pcs
6	Cover ring Ø 34 complete	F 960 989 AA	1 Set	26	O - ring Ø 19 x 2,5		
8	Guide sleeve handle	F 960 990 NU	1 pcs	27	Connector nipple		
9	O - ring set	A 860 931 NU	1 Set	28	O - ring set		
10	Clamping nut M32 x 1			29	Body (built-in)		
11	Cylindrical screw M4x12 DIN6912			30	Superior block M10x1		
12	Lever adapter + screw	F 960 991 NU	1 Set	31	Flushing device complete	F 960 881 NU	1 Set
13	Cartridge Kerox Ø28	F 960 855 NU	1 pcs	32	Plug with o-ring	A 963 548 NU	1 Set
14	O - ring Ø 39,2 x 3			33	O - ring Ø 54 x 2,5		
15	Escut. w. Pos.14 Logo Sottini	A 861 017 AA	1 Set	34	Plaster guard for cartridge		
16	Escutcheon for spout	F 961 009 AA	1 pcs	35	Cover for pos. 34		
17	Sleeve with thread inside			36	O - ring Ø 26 x 2,5	A 860 845 NU	1 pcs
18	Cylindrical screw M4 x 12			37	Plaster guard for spout		
19	Insert			38	Cover for pos. 37		
20	Aerator M18x1 - 5ltr/min	A 963 369 AA	1 pcs	39	Extension kit 20mm longer	F 960 867 NU	1 Set