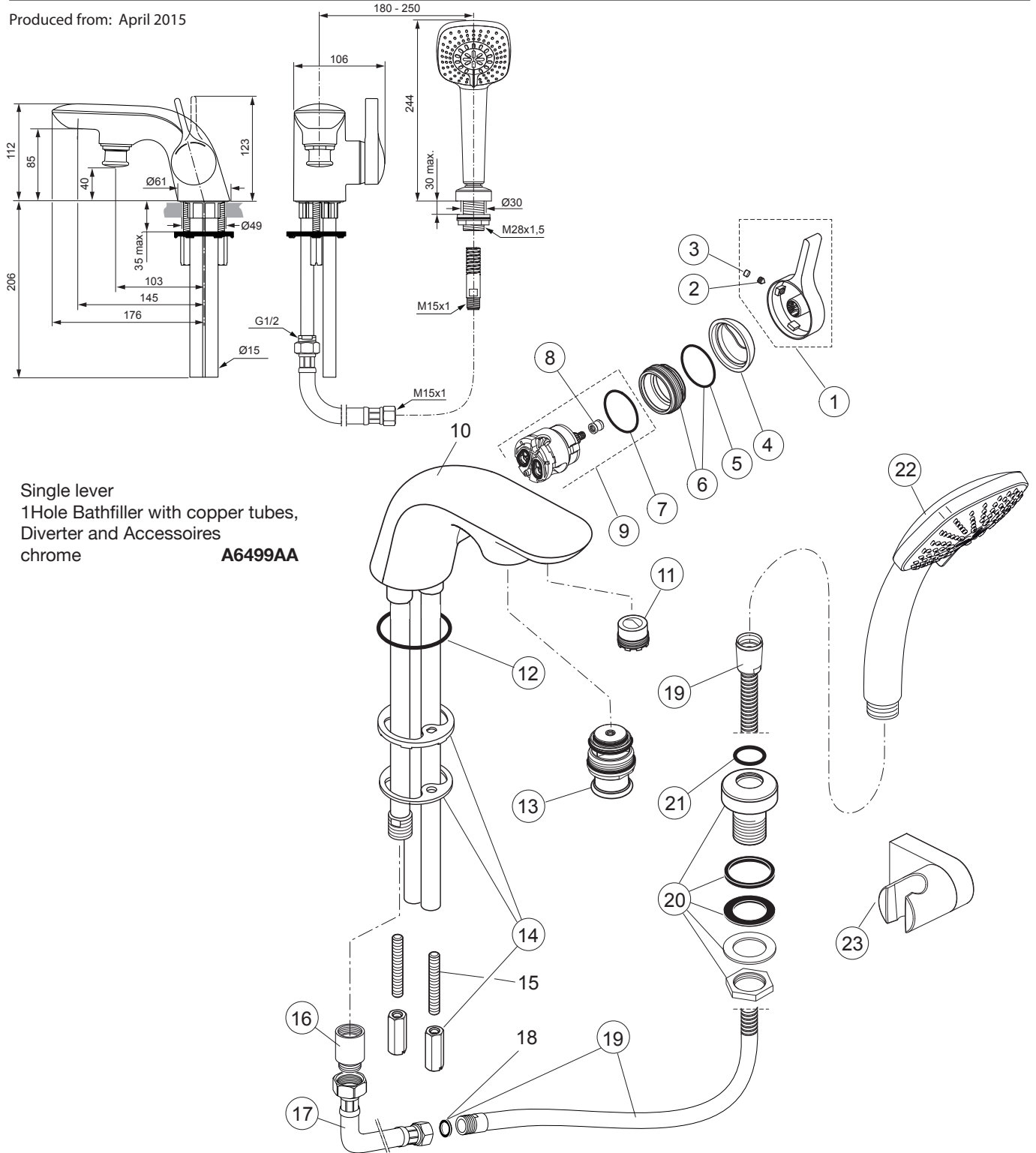


Produced from: April 2015



Single lever  
1Hole Bathfiller with copper tubes,  
Diverter and Accessoires  
chrome **A6499AA**

Pos.	Description	Part-Number	Qty.	Pos.	Description	Part-Number	Qty.
1	Lever cpl. with Logo Sottini	<b>A 860 962 AA</b>	1 Set	13	Diverter complete	<b>A 963 153 AA</b>	1 Set
2	Thread pin M5x6 DIN914	<b>A 963 667 NU</b>	1 pcs	14	Fixation-set + Pos.12	<b>A 960 205 NU</b>	1 Set
3	Rubber button	<b>A 963 751 NU</b>	1 pcs	15	Stud M8 x 56		
4	Cartr. Cover (Cap)	<b>A 961 485 AA</b>	1 pcs	16	Non-return valve complete	<b>A 963 287 AA</b>	1 Set
5	O - Ring Ø 28,3 x 1,78	<b>A 961 667 NU</b>	2 pcs	17	Non-return valve DW15	<b>A 962 594 NU</b>	2 pcs
6	Clamping nut M43 x 1,5	<b>N 960 019 AA</b>	1 Set	18	Flex. hose G1/2 x M15x1	<b>H 960 185 NU</b>	1 pcs
7	O - Ring Ø 35 x 3,2	<b>A 962 715 NU</b>	1 pcs	19	Washer Ø14x8,5x1,5		
8	Nut f. handle adaption	<b>A 963 372 NU</b>	1 pcs	19	Shower hose G1/2xM15x1	<b>H 960 440 AA</b>	1 pcs
9	Cartridge Multiport	<b>A 960 145 NU</b>	1 pcs	20	Holder cpl. f. hand shower	<b>A 962 061 AA</b>	1 pcs
10	Body Bathfiller			21	O - Ring Ø 22 x 3	<b>A 960 239 NU</b>	1 pcs
11	Aerator M24 x 1 + Key	<b>A 960 412 NU</b>	1 Set	22	Hand shower cpl.	<b>F 961 048 AA</b>	1 pcs
	Aerator key for Pos. 11	<b>A 960 196 NU*</b>	1 Set	23	Hand shower holder	<b>B 960 925AA</b>	1 pcs
12	O - Ring Ø 50,39 x 3,53	<b>A 963 157 NU</b>	2 pcs				

\* Universal-Set - not all parts are needed