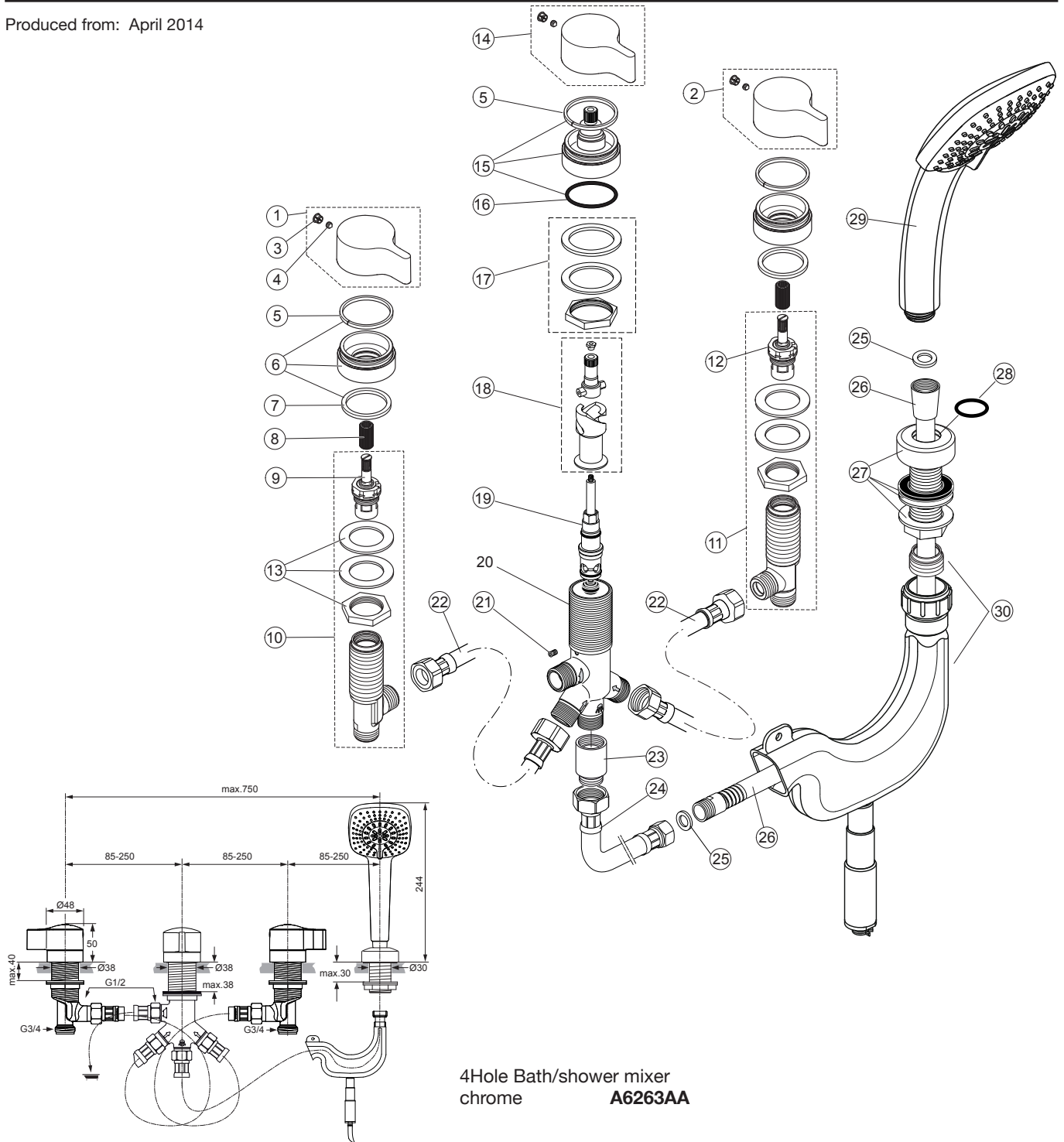


Produced from: April 2014



4Hole Bath/shower mixer
chrome **A6263AA**

Pos.	Description	Part-Number	Qty.	Pos.	Description	Part-Number	Qty.
1	Handle with IS-Logo - red	A 962 052 AA	1 pcs	17	Fixation-set Diverter	A 963 026 NU	1 pcs
2	Handle with IS-Logo - blue	A 962 053 AA	1 pcs	18	Spindle complete	A 860 452 NU	1 pcs
3	Cover shield	A 960 396 AA	1 pcs	19	Diverter unit	A 860 453 NU	1 pcs
4	Thread pin M5x5 DIN914	A 961 268 NU	2 pcs	20	Body Diverter valve		
5	Gliding f. Handle	A 960 445 NU	1 pcs	21	Thread pin M4x7 SW2	A 962 371 NU	1 pcs
6	Escutcheon with washer	A 962 054 AA	1 pcs	22	Flex. hose G1/2 x G1/2	H 960 312 NU	1 pcs
7	Washer Ø 41 x 34 x 3	A 960 499 NU	1 pcs	23	Non-return valve complete	H 960 184 NU	1 pcs
8	Handle adapter	A 962 335 NU	1 pcs		Non-return valve DW15	A 962 594 NU	2 pcs
9	Headwork (hot side)	A 963 033 NU	1 pcs	24	Flex. hose G1/2 x M15x1	H 960 185 NU	1 pcs
10	Side valve hot complete	A 962 055 NU	1 pcs	25	Washer	A 961 817 NU	5 pcs
11	Side valve cold compete	A 962 056 NU	1 pcs	26	Shower hose G1/2xM15x1	H 960 440 AA	1 pcs
12	Headwork (cold side)	A 962 336 NU	1 pcs	27	Holder cpl. f. Handshower	A 962 061 AA	1 pcs
13	Fixation-set Side valve	A 963 049 NU	1 Set	28	O - Ring Ø 22 x 3	A 960 239 NU	1 pcs
14	Handle Diverter w/o Logo	A 962 059 AA	1 pcs	29	Handshower complete	T 2439 AA	1 pcs
15	Escutcheon complete	A 962 060 AA	1 pcs	30	Device for Handshower Drainage	F 961 079 NU	1 Set
16	O - Ring Ø37,77 x 2,62	A 962 574 NU	1 pcs				