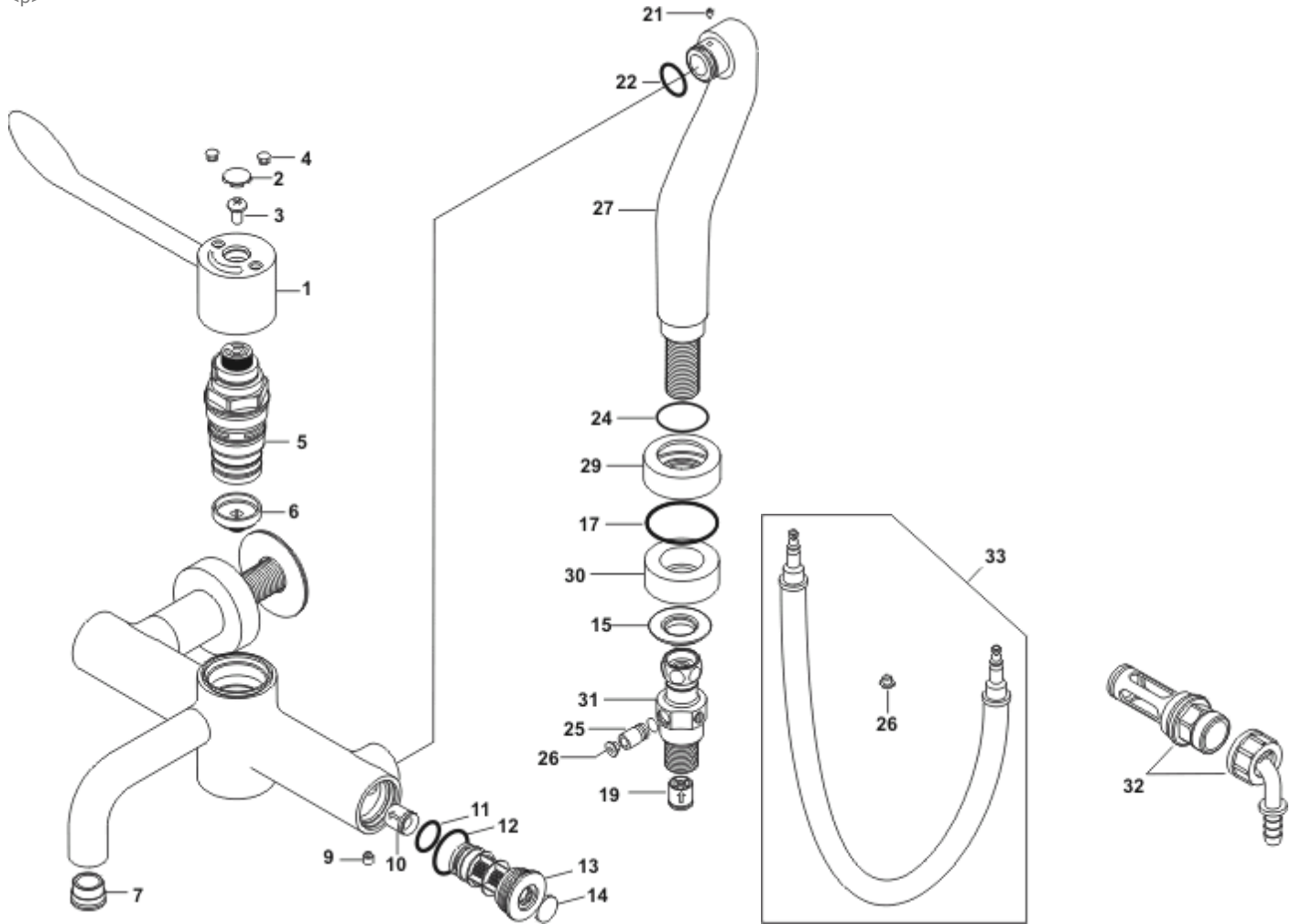


ARMITAGE SHANKS MARKWIK NEW S8238AA SEQUENTIAL THERMOSTATIC MXR LVR - DECK MOUNTED 160mm REACH

<p>



Ref.	Description	Part No.
1	Lever Handle	E960668AA
1a	Handle index kit (includes 2, 3, 4R & 4B)	E960615AA
2	Cover cap	E907042NU1
3	Handle screw	E918351NU
4R	Index button red	E907022NU
4B	Index button blue	E907023NU
5	Sequential, thermostatic cartridge	E960575NU
6	Cartridge seat insert	E960664NU
7	Antisplash	A924305
9	Grub screw M6 x 6	E91830067
10	Combined check valve & flow regulator CV15FR	E910213NU
11	O-ring dia 17.6 x 2.4	E912659NU
12	O-ring dia 27.6 x 2.4	E912706NU
13	End cap, Maint carrier & filter	E950507NU
14	Index button	E960641AA
15	Backnut	E960112NU
16	Slip washer dia 60 x 25 x 2	E960631NU
17	O-ring 51.6 x 2.4	E960632NU
18	Wall plate	E960633NU
19	Check valve DW15	A952849
21	Grub screw M4 x 6	E91831067
22	O-ring dia 19.6 x 2.4	E912623NU
26	Dust cover	E909600NU
27	Deck mounted inlet leg	E960694AA
28	OFFSET LEGS FOR MARKWIK THERM PANEL MTD (LH & RH)	E960610AA
28R	Offset inlet leg with shroud, maintenance / disinfecting valve RH	E950661AA
28L	Offset inlet leg with shroud, maintenance / disinfecting valve LH	E950660AA
30	Spacer	E911126NU
32	Purging kit (available separately)	S8214AA
33	Disinfection kit (available separately) - Includes dust cap	S8239NU

NB -- colour/finish optionsChrome = AA
