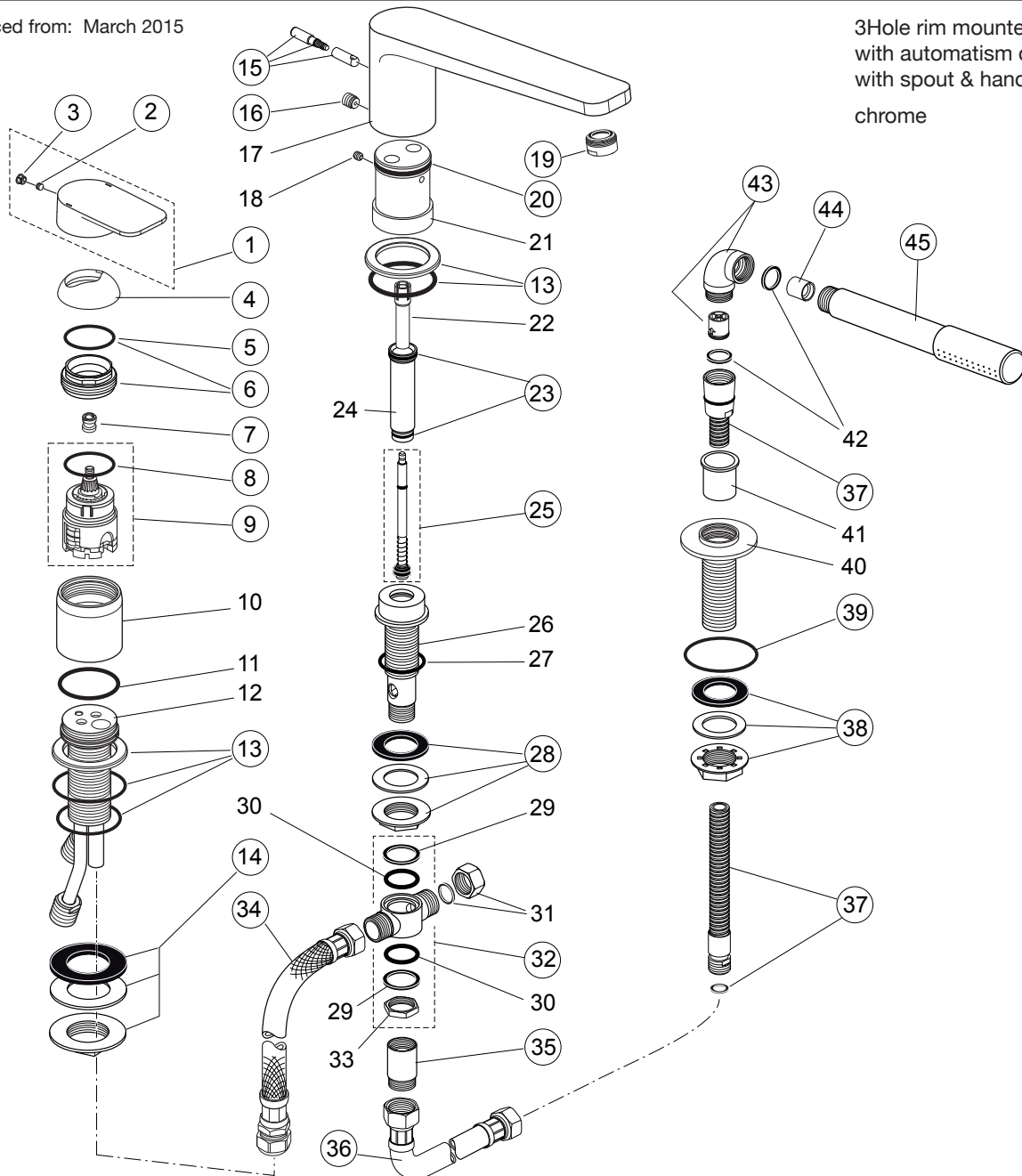


# Tonic II A6348..



Produced from: March 2015

3Hole rim mounted single lever  
with automatism diverter,  
with spout & hand spray  
chrome **A6348AA**



Pos.	Description	Part-Number	Qty.	Pos.	Description	Part-Number	Qty.
1	Lever cpl. with red/blue	<b>A 860 917 AA</b>	1 pcs	24	Sleeve adapter	<b>F 960 895 NU</b>	1 Set
2	Thread pin M5x6 DIN914	<b>A 860 603 NU</b>	1 pcs	25	Diverter spindle complete	<b>F 960 895 NU</b>	1 Set
3	Handle cap	<b>A 960 396 AA</b>	1 pcs	26	Shaft for Spout		
4	Cover cap	<b>A 961 485 AA</b>	1 pcs	27	O - ring Ø 32 x 2,5		
5	O - ring Ø 28,3 x 1,78	<b>A 860 818 NU</b>	1 pcs	28	Fixation kit Spout	<b>H 960 380 NU*</b>	1 Set
6	Clamping nut M43 x 1,5 cpl.	<b>N 960 019 AA</b>	1 Set	29	Washer		
7	Srew adapter	<b>A 963 372 NU</b>	1 pcs	30	O - ring Ø 21 x 3,5		
8	O - ring Ø 35 x 3,2	<b>A 962 715 NU</b>	1 pcs	31	Plug G1/2 with Fibre-ring		
9	Cartridge Multiport cpl.	<b>A 860 621 NU</b>	1 pcs	32	T-Piece complete	<b>H 960 128 NU</b>	1 Set
10	Cover			33	Nut G1/2 - A/F 24mm		
11	O - ring Ø 40 x 3,0			34	Flex. hose G1/2 x 400mm	<b>A 962 823 NU</b>	1 pcs
12	Body Single lever			35	Non-return valve complete	<b>A 963 287 AA</b>	1 pcs
13	Escutcheon +O-rings	<b>A 860 918 AA</b>	1 Set	36	Flex. hose G1/2 + washer	<b>H 960 185 NU</b>	1 pcs
14	Fixation kit G 1"	<b>H 960 294 NU</b>	1 Set	37	Shower hose G1/2 -M15x1	<b>H 961 440 AA</b>	1 pcs
15	Lift rod knob complete	<b>A 962 349 AA</b>	1 Set	38	Fixation kit shower-holder	<b>H 960 657 NU*</b>	1 Set
16	Thread pin M10x10	<b>A 961 807 NU</b>	1 pcs	39	O - ring Ø 48 x 3	<b>F 961 021 NU</b>	1 pcs
17	Spout			40	Holder for hand shower		
18	Screw M6 x 6 Din 916			41	Plastic insert		
19	Aerator M24x1 -C-	<b>B 961 059 AA</b>	1 Set	42	Washer Ø 20,8 x 14,5 x 2,5		
20	O - ring Ø 39,34 x 2,62	<b>A 960 331 NU*</b>	1 Set	43	Elbow 96° f. Hand spray	<b>F 960 865 AA</b>	1 pcs
21	Insert			44	Flow limiter 8l/min	<b>B 961 093 NU</b>	1 pcs
22	Sleeve for diverter			45	Hand shower	<b>F 960 900 AA</b>	1 pcs
23	O - ring set	<b>F 960 894 NU</b>	1 Set				

\*Universal set (not all parts needed)