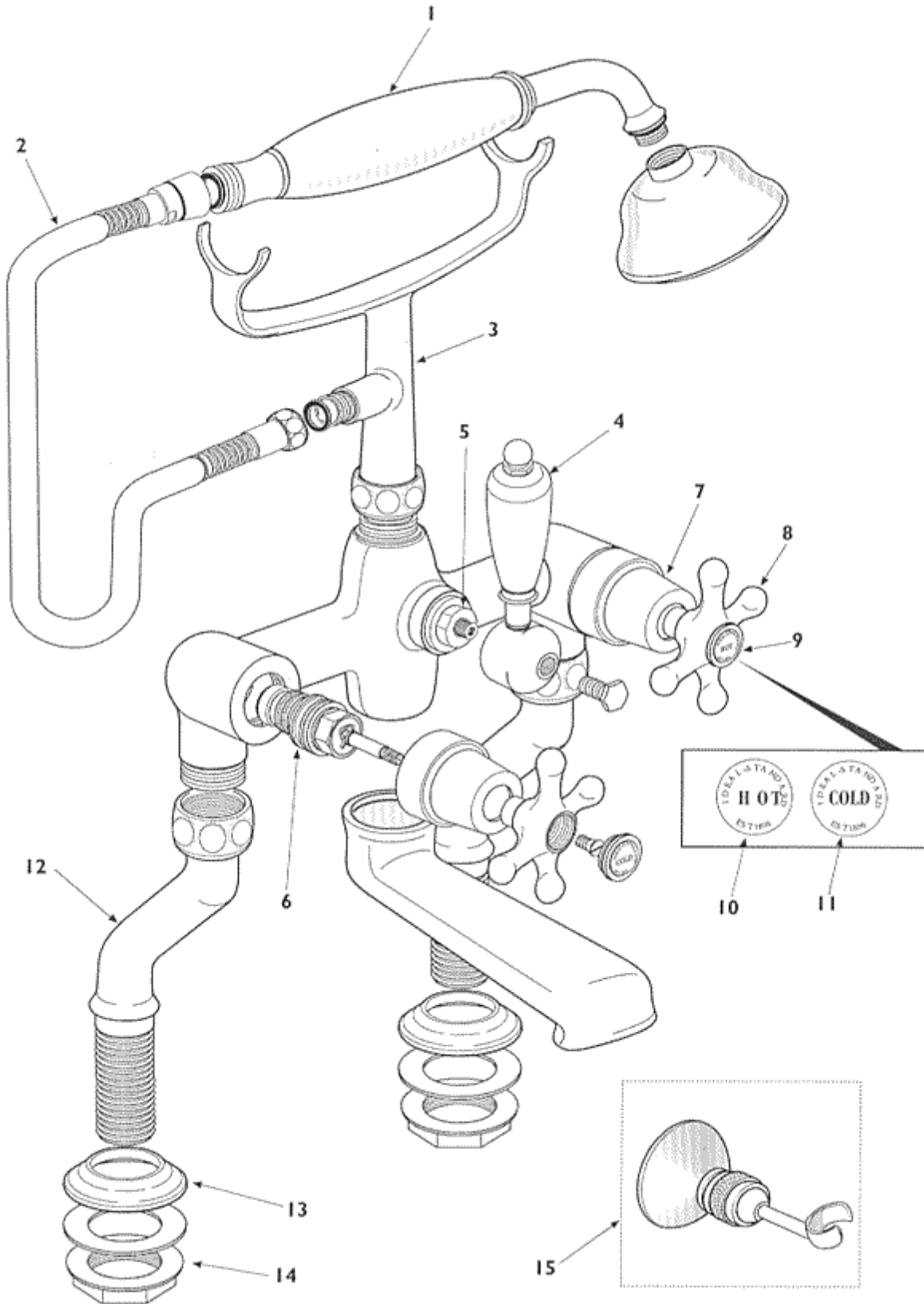


<p>





Ref.	Description	Part No.
1	Handspray	E950625--
2a	1.5M metal hose Chrome	E919593AA
2b	1.5M metal hose Gold	E919593AZ
3	Cradle	E950615--
4c	Divertor handle - Chrome	E960544AA
4g	Divertor handle - Gold (includes GP screw)	S960088AZ
5	Divertor valve	E960547AA
5a	Metal divertor valve washers order x2 6x2.0mm nbr75	E912775NU
6	1/2" Valve (extended spindle)	A951131NU11
7	Valve cover	E907788--
8	Handle	E908791--
9	Handle Indice Housing	E909649--
10	Hot Index	E909657NU
11	Cold Index	E909658NU
12	KINGSTON BATH SHWR MXR LEGS CHROME	E960191AA
12a	O-rings for legs	E912773NU
13	3/4" Flange	E907783--
14	3/4" Backnut	EESM40710067
14a	E960111NU	E960111NU
15c	Showering station Chrome	E960546AA
15g	Showering station Gold	E907786AZ
16	Nut Retainer	E9057281411
17	Nut retaining screw for divertor	E918379--
18	leg nut and cradle washer (not shown)	E913212NU
19	leg washer fibre	E913212NU
20	Divertor shuttle plastic with oring	S960940NU
21	Shuttle valve washer orderx2	E960542NU
22	SHOWER HOSE BRACKET - CHROME	EEM134901AA
23	SHOWER HOSE BRACKET - WHITE	EEM13490001

NB -- colour/finish options

Chrome = AA
Light Gold = AZ