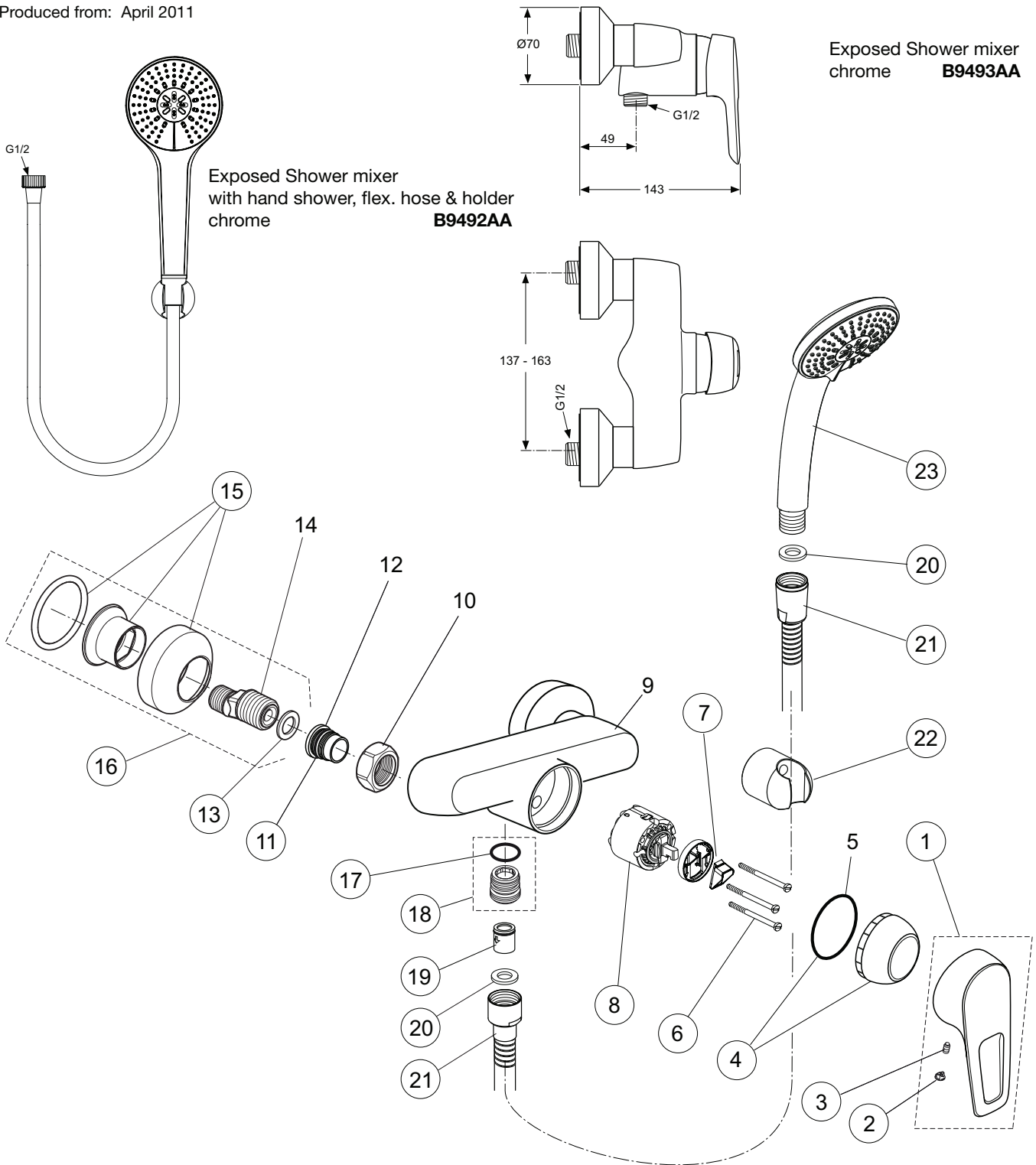


Produced from: April 2011



Pos.	Description	Part-Number	Qty.	Pos.	Description	Part-Number	Qty.
1	Lever cpl. with Logo ISI	A 963 227 AA	1 pcs	13	Fibre ring	A 961 139 NU	2 pcs
2	Thread pin M5x10 DIN915	A 963 309 NU	1 pcs	14	S-connector with low noise insert	B 960 365 AA	2 pcs
3	Handle cap	A 963 054 NU	1 pcs	15	Escutcheon set complete	A 962 050 AA	2 pcs
4	Cap	B 960 276 AA	1 pcs	16	S-connector complete	A 961 640 NU	2 pcs
5	O - ring Ø 39,10 x 1,30			17	O - ring Ø 18,2 x 1,7	B 960 970 AA	1 pcs
6	Cylindrical screws M4 x 50	B 960 570 NU	3 pcs	18	Nipple complete		
7	ECO-kit	A 860 700 NU	1 Set	19	Non-return valve	A 962 594 NU	2 pcs
8	Cartridge Ø47 + Pos. 7	A 960 500 NU	1 pcs	20	Washer Ø 18,5 / 11 x2	A 961 817 NU	5 pcs
9	Body Shower			21	Metal hose 150cm lg.	F 960 697 AA	1 pcs
10	Coupling nut G3/4			22	Wall holder f. hand shr.	B 960 096 AA	1 pcs
11	O - ring Ø 15,6 x 1,78	A 961 182 NU	2 pcs	23	Hand shower 3F / 8l/min	B 9403 AA	1 pcs
12	Seat M19x1,5 left Thread						