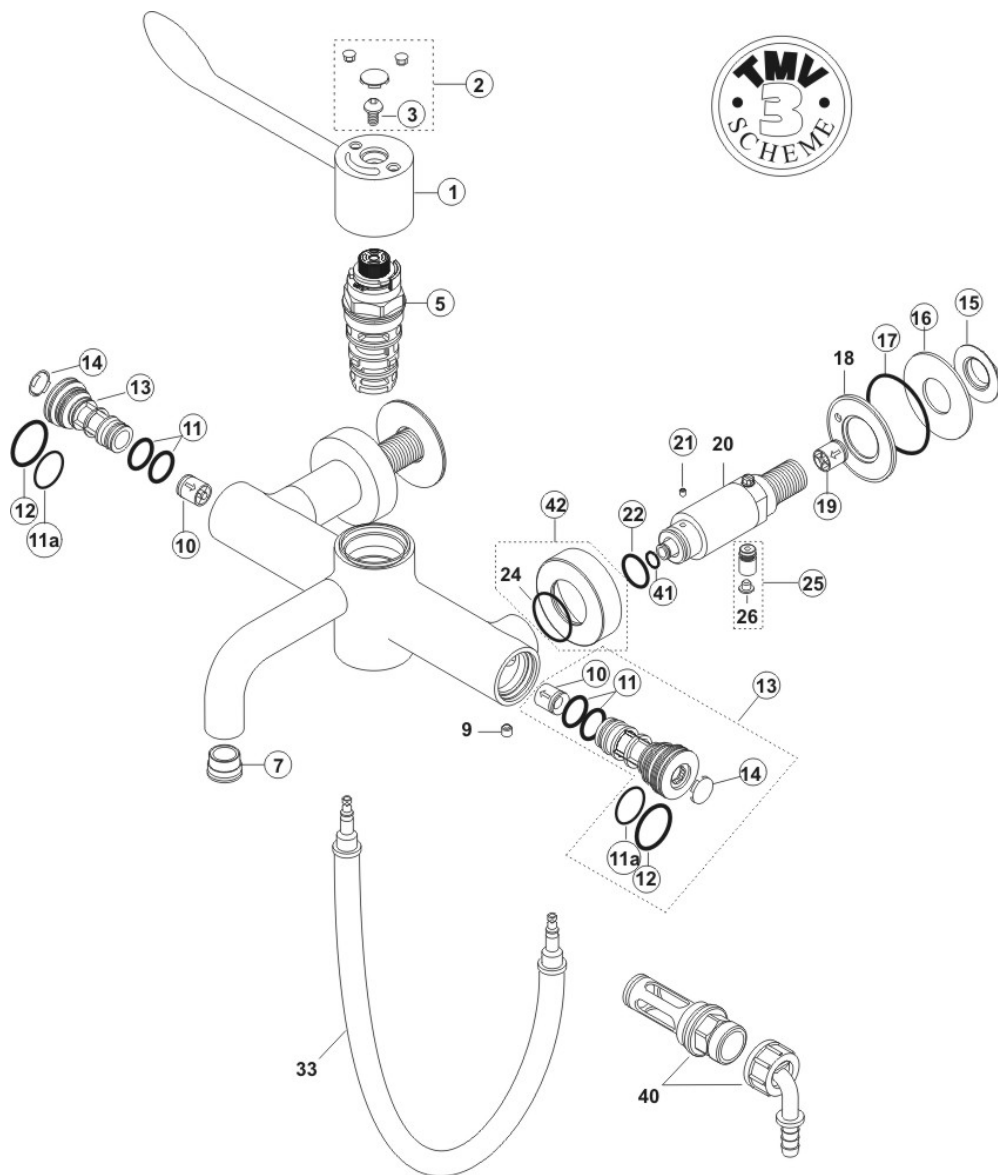


# A4553AA Markwik Lever Operated Sequential Thermostatic Panel Mounted Mixer Tap



**To Aug10** product uses cartridge E960575NU and Seat E960664NU (whilst stocks last).  
 (E960575NU Identifiers: WHITE SPINDLE, BRASS ADJUSTMENT RINGS).  
 Thereafter, use Cartridge A962280NU –IMPORTANT when using this cartridge remove brass seat from product.

**From Sep10** products will use only Cartridge A962280NU (brass seat not included).  
 (A962280NU Identifiers: BLACK SPINDLE, STAINLESS STEEL ADJUSTMENT RINGS).

3 Handle screw	A961950NU	19 Check valve DW15	A962594NU
5 Sequential, thermostatic cartridge	A962280NU	20 Straight inlet tail with maintenance / disinfecting valve	-
7 Anti-splash	A960191NU	21 Grub screw M4 x 6	A963667NU
9 Grub screw M6 x 6	-	22 O-ring dia 17 x 2.5 (set of 4)	A963143NU
10 Combined check valve & flow regulator CV15FR	A962689NU	24 O-ring dia 34.1 x 1.6	-
11 O-ring dia 17.6 x 2.4	A962497NU	25 Sterilising nipple assembly (fit hand tight only)	A962498AA
11a O-ring 25.0 x 1.5	A962496NU	26 Dust cover	-
12 O-ring dia 34.0 x 2.0	A960183NU	41 O-ring dia 8.1 x 1.6 (single)	A962345NU
13 End cap, maintenance carrier & filter (complete with	A962343AA	42 Shroud	A962346AA
14 Index button	E960641AA	<b>Optional extras</b>	
15 Backnut	E960112NU	33 Disinfection kit (available separately)	S8239NU
16 Slip washer dia 60 x 25 x 2	E960631NU	40 Purging kit (available separately)	A4556AA
		43 EXTRACTION TOOL KIT FOR INTA CART SEAT	A963377NU
		44 CONVERSION KIT PANEL MOUNT LEVER TO PROXIMITY	A963379AA

