

<p>

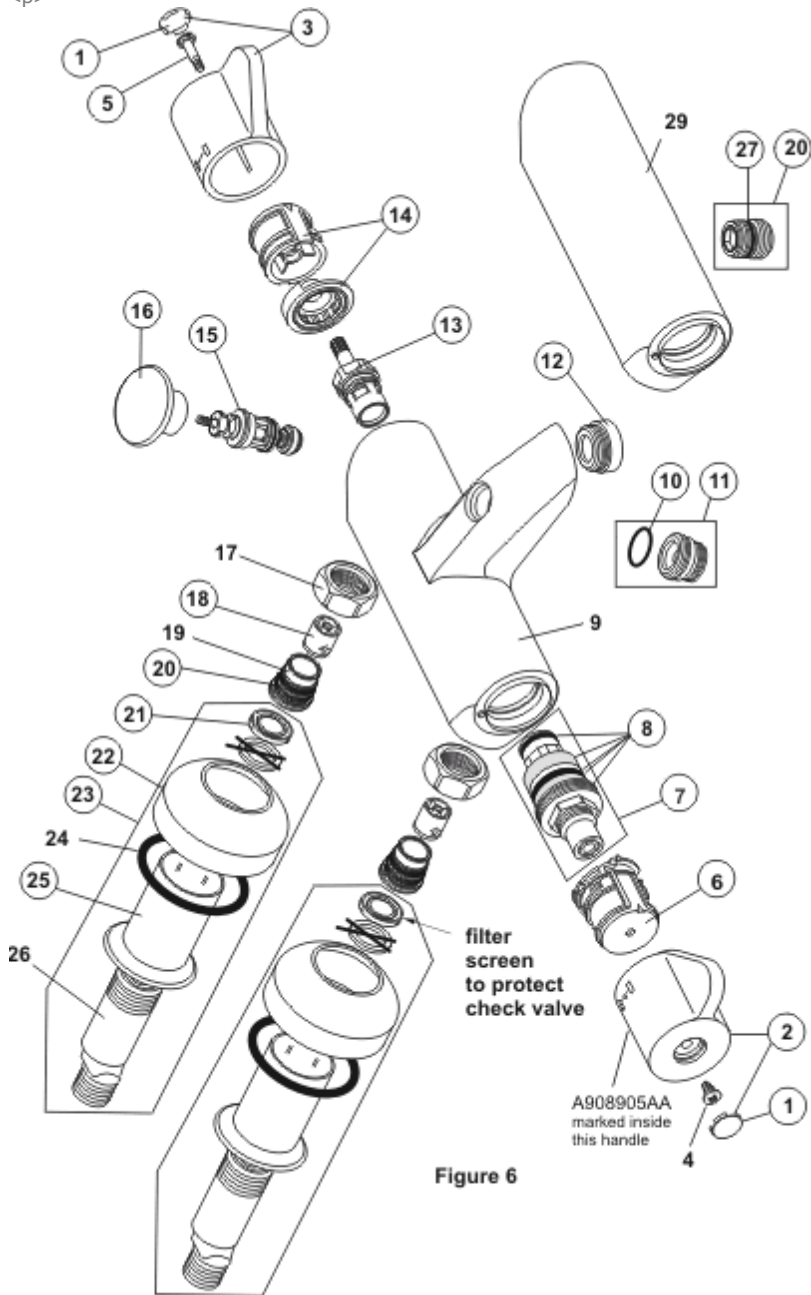


Figure 6

| Ref. | Description | Part No. |
|-------------|--|-----------------|
| 1 | COVER BUTTON CHROME NO LOGO | E960641AA |
| 2 | TEMPERATURE HANDLE CERAPLUS | A961885AA |
| 3 | VOLUME HANDLE CONTOUR 21 ARMITAGE SH-CH | A961932AA |
| 5 | REPRISE CARTRIDGE SCREWS M4 PAIR | A962998NU |
| 6 | TEMPERATURE ADJUSTMENT UNIT | A961889NU |
| 7 | THERMOSTATIC CARTRIDGE 1/2" | A962229NU |
| 8 | O-RINGS AND SCREENS FOR CARTRIDGE | A962230NU |
| 10 | O-RING FOR 1/2IN CARTRIDGE (2 REQUIRED) | A961640NU |
| 11 | CONNECTING.NIPPEL G1/2 | A963823AA |
| 12 | AERATOR KPL.-CHROME | A961891AA |
| 13 | CARTRIDGE COMPLETE | A963033NU |
| 14 | VOLUME CONTROL HANDLE CARRIER | A963432NU |
| 15 | DIVERTER COMPLETE JADO | A860780AA |
| 16 | PULLBUTON ELEMENTS BR/BADE, CHROME | A960394AA |
| 18 | NON RETURN VALVE (2 REQUIRED) | A962594NU |
| 20 | O RING (2 REQUIRED) | A961810NU |
| 21 | SCREEN INSERT | A961892NU |
| 22 | ESCUTCHEON OUTSIDE, CHROM | A960599AA |
| 23 | S-CONNECTOR ESCUTCHEON ASSY | A961893NU |
| 25 | INTERN ROSETTE FOR ON/OFF S-CONNECTOR CH | A961894AA |
| 27 | O RING (2 REQUIRED) | A961810NU |
| 28 | OUTLET NIPPLE 1/2" | A963651NU |
