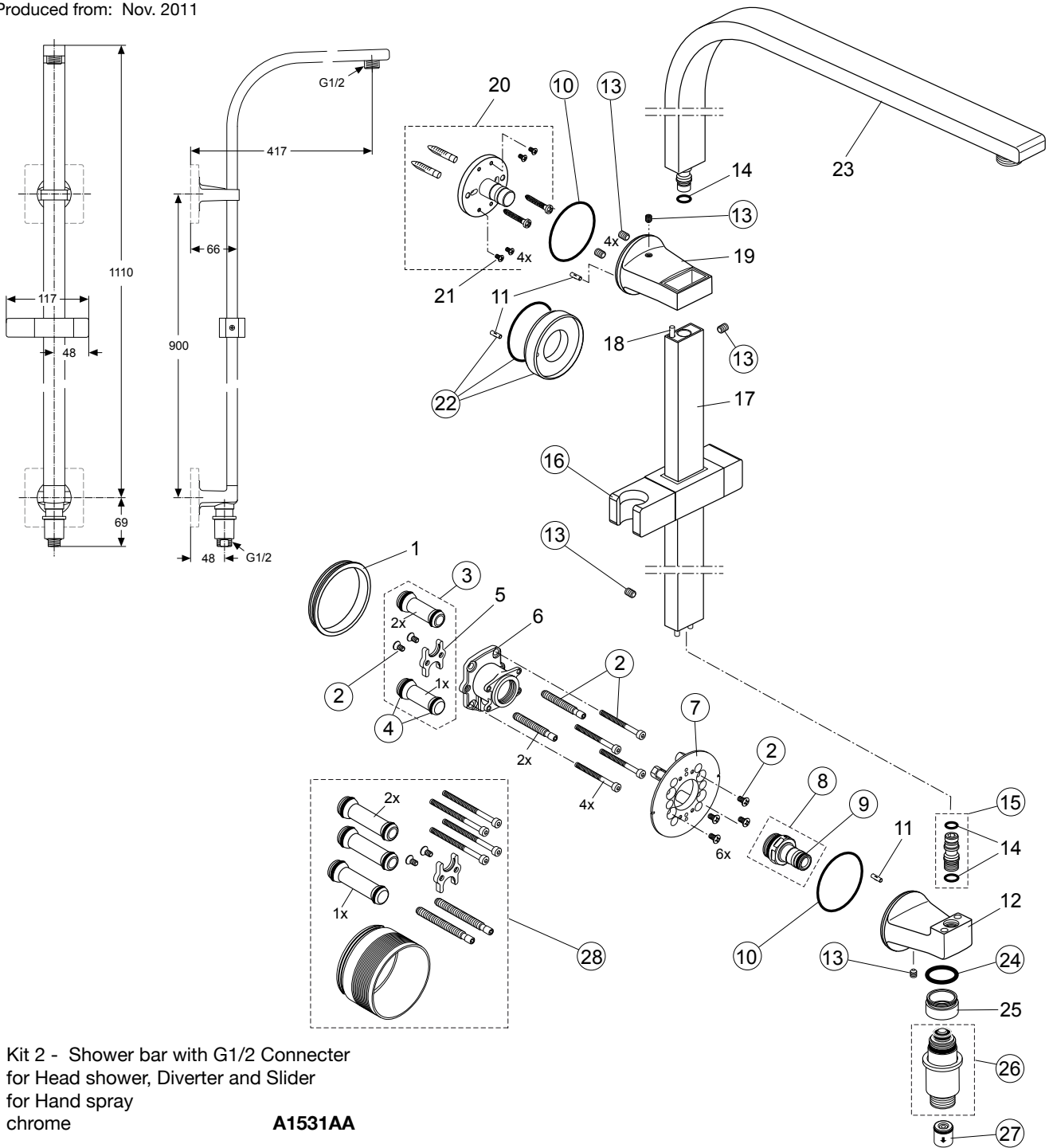


Produced from: Nov. 2011



Kit 2 - Shower bar with G1/2 Connector for Head shower, Diverter and Slider for Hand spray chrome  
**A1531AA**

Replace XX with the appropriate finish code  
chrome = AA,

Example spare part order:  
**A 860 870 AA** in chrome

Pos.	Description	Part-Number	Qty.	Pos.	Description	Part-Number	Qty.
1	Seal ring			15	Fixation nipple shr. bar	<b>A 860 872 NU</b>	1 pcs
2	Screw set vol./conn. valve	<b>A 860 842 NU</b>	1 pcs	16	Slider / hand spray holder	<b>A 860 870 XX</b>	1 pcs
3	Ball canal / connector	<b>A 860 847 NU</b>	2 pcs	17	Shower bar pipe		
4	O-ring set Ø10 + Ø13x2,5	<b>A 860 852 NU</b>	1 Set	18	Groove pin 4x18 ISO8741		
5	Flange / fixation / holder			19	Wall Fixation shower bar		
6	Body for vol. valve & accessories			20	Flange fixation kit complete		
7	Escutcheon holder	<b>A 860 853 NU</b>	1 Set	21	Counter sunk screw M3x6 DIN 963		
8	Connector nipple open	<b>A 860 867 NU</b>	1 pcs	22	Distance plate Ø51 cpl.	<b>A 860 825 XX</b>	1 Set
9	O - ring Ø10 x 2	<b>A 963 495 NU</b>	2 pcs	23	Shower bar pipe head shower		
10	O - ring Ø41 x 1,78	<b>A 961 863 NU</b>	1 pcs	24	O-ring Ø20x1,5	<b>A 961 644 NU</b>	1 Set
11	Groove pin 3x10 DIN1474			25	Sleeve M25x1 outside - M22x1 inside		
12	Wall connection elbow			26	Diverter complete	<b>A 860 869 XX</b>	1 pcs
13	Thread pin M5x5	<b>A962 625 NU</b>	1 Set	27	Non-return valve DW15	<b>A 962 594 NU</b>	2 pcs
14	O-rings Ø7x1,5 u. Ø7,65x1,78			28	Extension kit 15mm longer	<b>A 963 738 NU</b>	1 Set